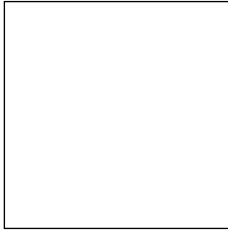


MULTI

www.besprechungsmoebel.de

Zusammensetzung: Polypropylen

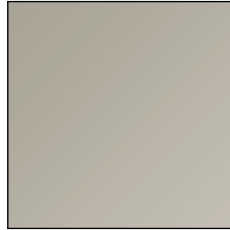
PP



RAL 9003
Weiß



RAL 7040
Grau



Pantone 7536C ★
Sand



RAL 9005 ★
Schwarz



RAL 3002
Rot



Pantone 375 C
Grün



RAL 5013
Blau

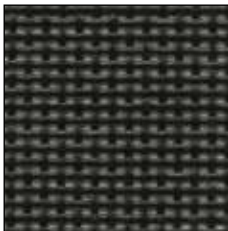
MULTI MESH

Zusammensetzung: Polyester - PVC

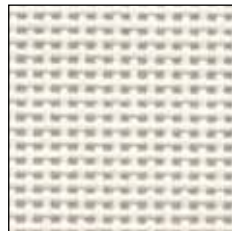
Gewicht: Gr / m² 500

Scheuerfestigkeit: 120.000 Martindale

Deutschland: B1 DIN 4102-1



RAL 9005
Schwarz



RAL 9003
Weiß



RAL 7040
Grau

Gestellausführungen:

AUSFÜHRUNGEN UNTERGESTELL

Lackiert: Schwarz RAL 9005 / Grau / Weiß RAL 9003

Verchromt

MIRAGE

Zusammensetzung: 100% Polyester fire retard

Gewicht: Gr / m² 460

Scheuerfestigkeit: 100.000 Martindale

Lichtechtheit: 5 (EN ISO 105 B02)

Deutschland: B1 DIN 4102



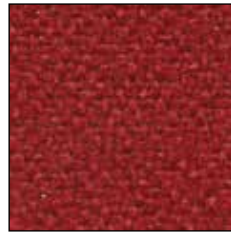
532



533



534



572



236



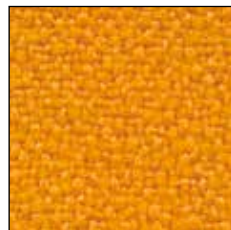
234



53



119



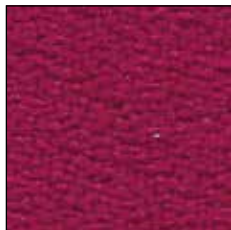
66



120



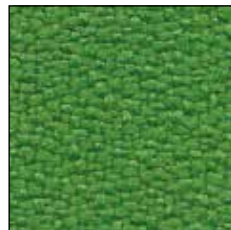
231



173



426



443



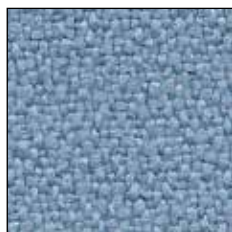
496



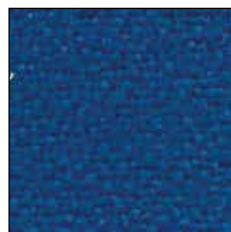
411



573



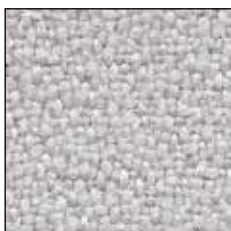
377



331



333



643



629



625



378



651

PLANET

Composizione - Composition - Composition - Zusammensetzung: 87,5% PVC - 12,5% Cotone - Cotton - Coton - Baumwolle

Peso - Weight - Poids - Gewicht: Gr / m² 640

Resistenza sfregamento - Abrasion resist - Résistance frottement - Scheuerfestigkeit: 100.000 Martindale

Resistenza al sole - Light fastness - Résistance á la lumière - Lichtechtheit: 5 (EN ISO 105 B02)

Resistenza al fuoco - Fire proof - Résistance au feu - Feuerbeständigkeit: Italia: classe 1.IM - BS EN 1021-1/2 cigarette&match test UK - France: M2



991



6



4008



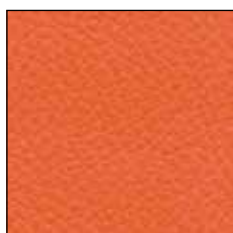
1984



1110



71



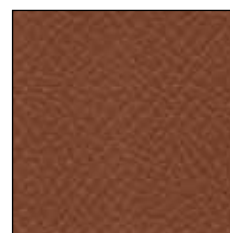
717



680



726



1304



1305



4979



4975



1817



4947