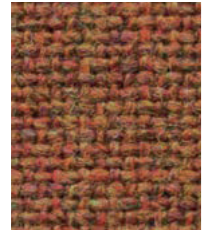


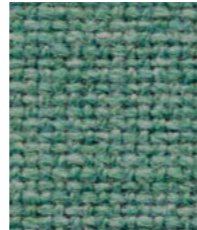
**SG1 Advantage**



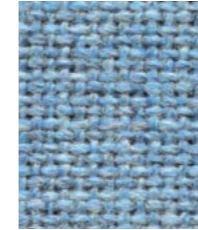
**Tawny**  
AD098



**Raspberry**  
AD127



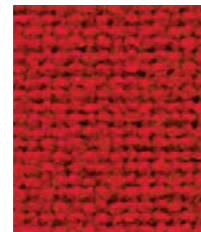
**Kingfisher**  
AD122



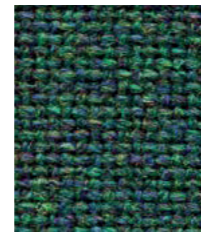
**Sea Blue**  
AD017



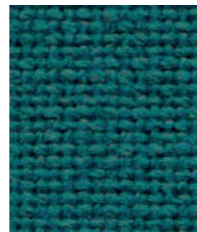
**Pewter**  
AD072



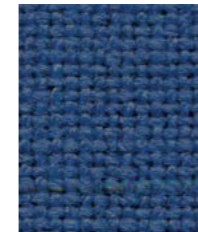
**Red**  
AD014



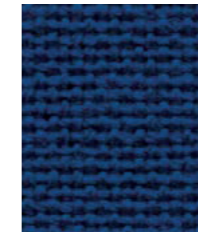
**Persian**  
AD101



**Turquoise**  
AD027



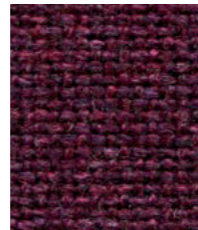
**Adriatic**  
AD001



**Clipper**  
AD126



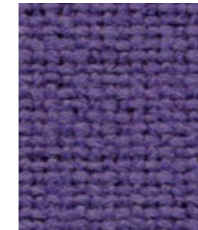
**Cinnamon**  
AD111



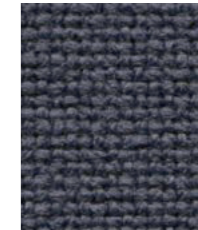
**Grape**  
AD029



**Aqua**  
AD002



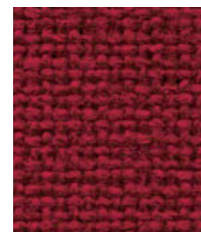
**Purple**  
AD118



**Granite**  
AD009



**Mineral**  
AD010



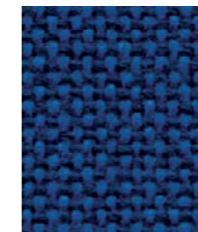
**Wine**  
AD020



**Damson**  
AD093



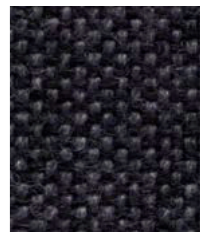
**Trident**  
AD124



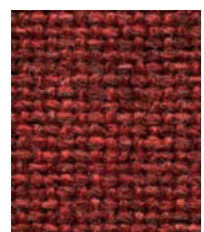
**Hobbit**  
AD213



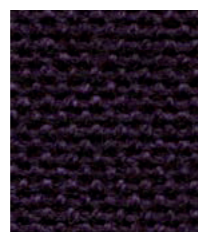
**Cobalt**  
AD004



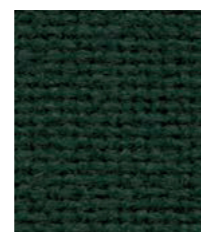
**Graphite**  
AD066



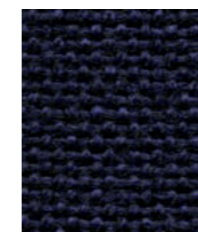
**Cranberry**  
AD005



**Beetroot**  
AD116



**Aztec**  
AD113



**Nightshade**  
AD011



**Charcoal**  
AD028



**Black**  
AD055



# SG1 Advantage

www.uebel-einrichtungen.de



Low Hazard commercial seating fabric, Advantage, offers a combination of enduring aesthetic appeal and high performance durability which means it will look good and last for years. Advantage is a plain weave fabric in a rich assortment of colourways in both plains and mixes.



## Technical information

### UK

**Industry Application**  
Workplace, Education

**Composition**  
60% Polypropylene, 30% Wool,  
10% Viscose

**Width**  
130 cm minimum

**Weight**  
385 g/m<sup>2</sup> ±5% (501 g/lin.m ±5%)

**Abrasion Resistance\***  
Heavy duty/10 year guarantee  
Independently certified to ≥60,000  
Martindale cycles

**Flammability**  
EN 1021 - 1 (cigarette)  
EN 1021 - 2 (match)  
BS 7176 Low Hazard  
*Note: Flammability performance is dependent on components used. Our certificates show what substrates have been used in our tests. For composite tests customers must ensure their complete furniture meets the necessary standards.*

**Light Fastness**  
5 (ISO 105 - B02)

**Fastness to Rubbing**  
Wet: 3/4, Dry: 4 (ISO 105 - X12)

**Cleaning**  
Vacuum regularly. Wipe clean with a damp cloth or shampoo using proprietary upholstery shampoo.

\*Abrasion testing produces a wide variability of results even from the same test sample. The independent certificate of ≥60,000 cycles is available on our website or from our customer service team. Internally we specify this product at >50,000 cycles which we believe is realistic for repeatability of testing. Please be aware that abrasion testing alone is not a reliable indicator of the actual wear performance of fabrics. We're so confident in the durability of our products that we provide a robust 10 year guarantee (full details available). Please note that seam performance is dependent on seam construction and needle and thread type. We recommend that appropriate sewing advice be taken. Batch to batch variations in shade may occur within commercial tolerances. We reserve the right to alter technical specifications without notice. The Unregistered Design Rights and the Copyright in all designs are the exclusive property of Camira Fabrics Limited.

### D

**Einsatzbereich**  
Büro, Bildung

**Zusammensetzung**  
60% Polypropylen, 30% Wolle,  
10% Viskose

**Breite**  
130 cm nutzbare Breite

**Gewicht**  
385 g/m<sup>2</sup> ±5% (501 g/lfd.m ±5%)

**Scheuerfestigkeit\***  
Schwerer Objekteinsatz/10 Jahre  
Garantie Extern zertifiziert mit ≥60,000  
Scheuertouren Martindale

**Feuersicherung**  
EN 1021 - 1 (Zigarettentest)  
EN 1021 - 2 (Streichholztest)  
BS 7176 Low Hazard  
*Bemerkung: Die Schwerentflammbarkeit hängt von den verwendeten Komponenten ab. Unsere Zertifikate zeigen auf, welche Substrate bei den Tests verwendet wurden. Bei Verbundtests muss sichergestellt sein, daß das komplette Möbel den entsprechenden Standards entspricht.*

**Lichtechtheit**  
5 (ISO 105 - B02)

**Reibechtheit**  
Nass: 3/4, Trocken: 4 (ISO 105 - X12)

**Reinigung**  
Regelmässig staubsaugen. Dazu mit einem feuchten Tuch abwischen, oder mit einem speziellen Polsterschaum behandeln.

\*Die Scheuerfestigkeitsprüfung ergibt selbst bei gleichen Testmustern stark abweichende Ergebnisse. Das Zertifikat eines unabhängigen Prüfinstitutes über ≥60,000 Scheuertouren erhalten Sie von unserem Vertriebsinnendienst oder auf unserer Webseite. Intern spezifizieren wir dieses Produkt mit >50,000 Scheuertouren, die in der Serienfertigung als realistisch angenommen werden. Bitte nehmen Sie zur Kenntnis, dass die Scheuerfestigkeitsprüfung allein keine Aussagekraft über die Langlebigkeit eines Bezugsstoffes hat. Wir sind von der Langlebigkeit unserer Produkte überzeugt und bieten daher 10 Jahre Garantie (Details auf Anfrage). Eine optimale Nahtausreissfestigkeit hängt von der Nahtfahne, der verwendeten Nadel und dem Näh-Garn ab. Wir empfehlen daher Nähversuche durchzuführen. Handelsübliche Farbabweichungen können auftreten und berechtigen nicht zur Reklamation. Wir behalten uns die Änderung technischer Spezifikationen vor. Die registrierten und nicht registrierten Urheberrechte der Dessinierungen sind ausschliessliches Eigentum der Camira Fabrics Limited.

### F

**Application industrielle**  
Lieu de travail, Education

**Composition**  
60% Polypropylène, 30% Laine,  
10% Viscose

**Largeur**  
130 cm minimum

**Poids**  
385 g/m<sup>2</sup> ±5% (501 g/m.l ±5%)

**Résistance à l'abrasion\***  
Usage intense/garantie 10 ans.  
Certificat indépendant ≥60 000 cycles  
Martindale

**Flammabilité**  
EN 1021 - 1 (cigarette)  
EN 1021 - 2 (allumette)  
BS 7176 Low Hazard  
*Notez: La performance de flammabilité dépend des composantes utilisées. Nos certificats indiquent les substrats utilisés dans nos tests. Pour les tests composites, les clients doivent s'assurer que leurs meubles complets satisfont aux normes nécessaires.*

**Solidité à la lumière**  
5 (ISO 105 - B02)

**Solidité au Frottement**  
Mouillé: 3/4, Sec: 4 (ISO 105 - X12)

**Nettoyage**  
Aspirer régulièrement. Essuyer avec une étoffe humide ou nettoyer à l'aide d'un produit approprié pour tissus d'ameublement.

\*Les tests de résistance à l'abrasion proposent une large variété de résultat final, parfois sur le même échantillon de tissu. Le certificat indépendant de ≥60,000 cycles est disponible sur notre site internet; vous pouvez également contacter notre Service Clients. Nous validons ce produit - en interne - à >50,000 cycles; ce qui est, d'après nous, plus réaliste dans le but d'obtenir une continuité égale des résultats de tests. Merci de noter que l'abrasion seule ne constitue pas un indicateur de confiance dans la performance du tissu à long terme. Nous avons une confiance absolue en nos produits et leur durabilité, c'est pour cela que nous vous offrons une garantie robuste de 10 ans. Veuillez noter que la performance du joint dépend de sa construction ainsi que de l'aiguille et du type de fil utilisés. Une variation de couleurs peut provenir (commerciallement tolérable). Nous réservons le droit de changer les spécifications techniques sans préavis. Les Droits de Conception non-enregistrés et les droits d'auteur de tous les motifs sont la propriétés exclusives de Camira Fabrics Limited.

### ES

**Aplicación Industrial**  
Puesto de Trabajo, Educación

**Composición**  
60% Polipropileno, 30% Lana,  
10% Viscosa

**Ancho**  
130 cm mínimo

**Peso**  
385 g/m<sup>2</sup> ±5% (501 g/lin.m ±5%)

**Resistencia a la abrasión\***  
Garantía de 10 años con uso intenso  
independientemente del certificado de  
≥60,000 Ciclos Martindale

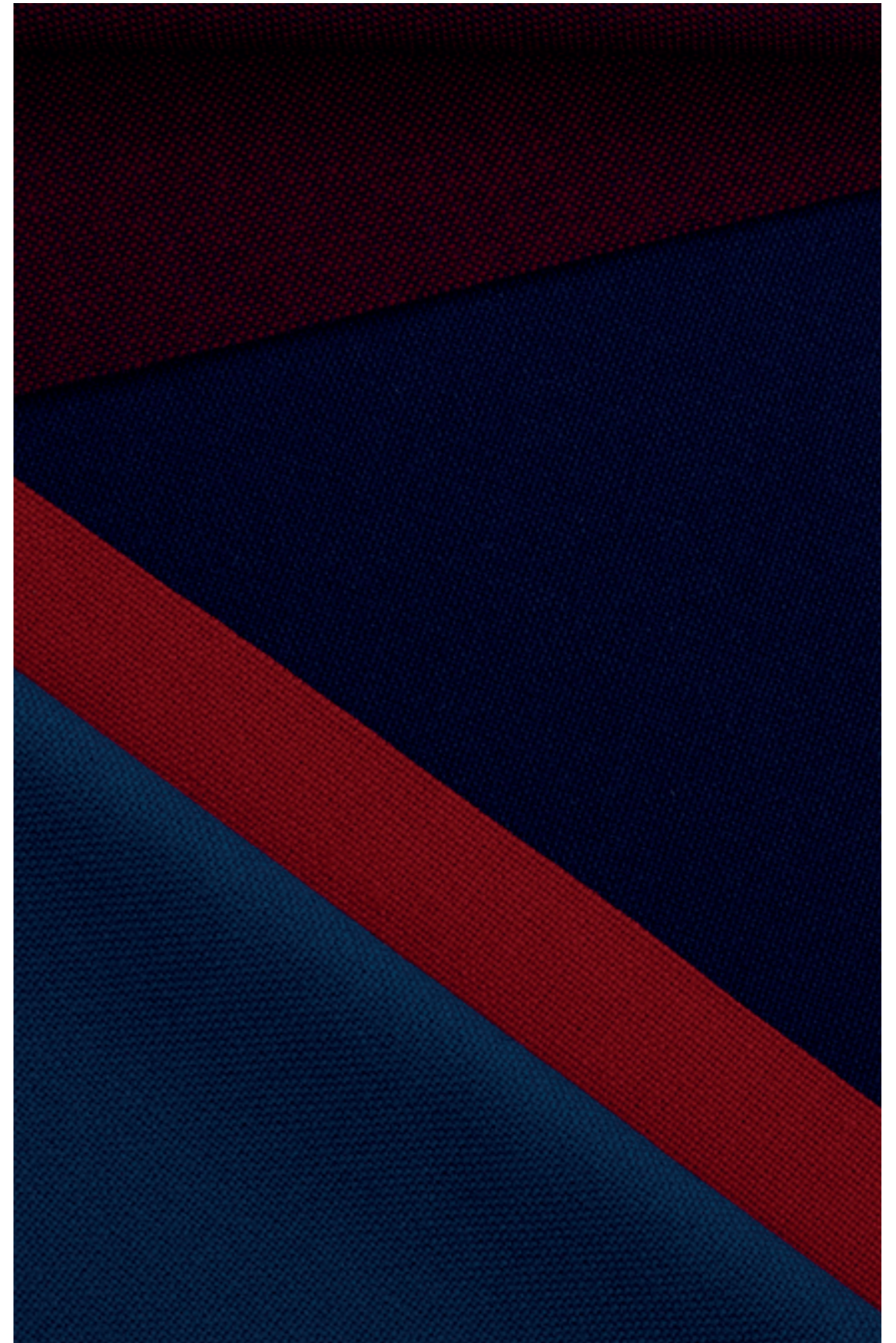
**Inflamabilidad**  
EN 1021 - 1 (cigarrillo)  
EN 1021 - 2 (cerilla)  
BS 7176 Low Hazard  
*Nota: El rendimiento de la inflamabilidad depende de los componentes usados. Nuestros certificados muestran qué substratos se han usado en nuestros tests. Para tests compuestos nuestros clientes deben asegurar si sus muebles cumplen la normativa al uso.*

**Solidez a la luz**  
5 (ISO 105 - B02)

**Solidez al rozamiento**  
Húmedo: 3/4, Seco: 4 (ISO 105 - X12)

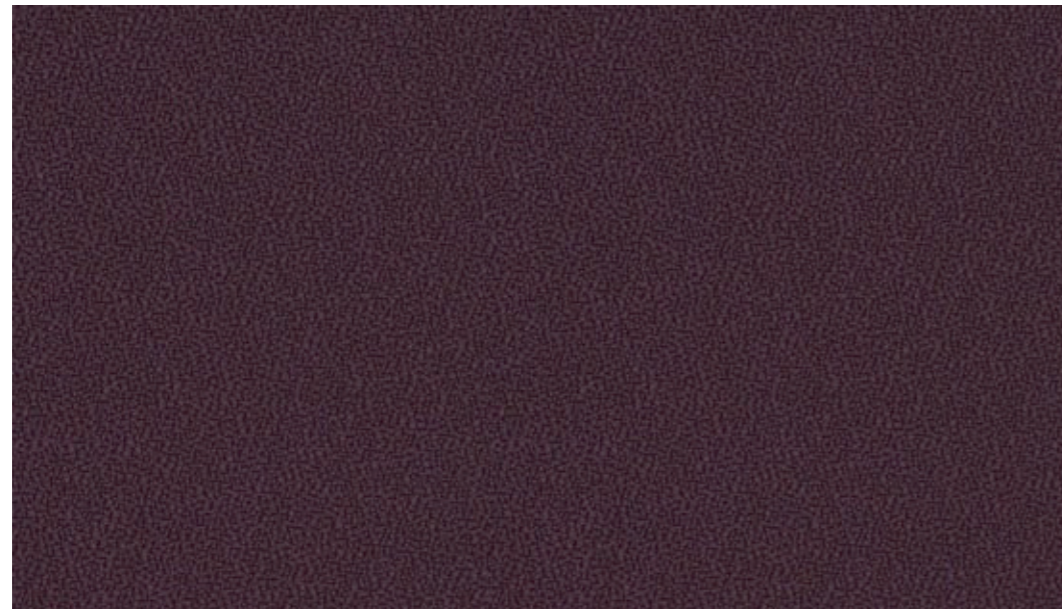
**Limpieza**  
Limpiar con aspiradora frecuentemente.  
Bien lavar con un paño húmedo o con un champú apropiado para tapicería.

\*Los Test de Abrasión producen unos resultados muy variables incluso con la misma muestra. El certificado de ≥60,000 ciclos Martindale está disponible en nuestra web o se puede pedir al Departamento Comercial. Internamente también certificamos este producto >50,000 ciclos, que pensamos que es lo más realista posible en este caso, con una repetición de resultados tan dispares. Tengan en cuenta que el Test de Abrasión solo no es un indicador fiable sobre el desgaste de un tejido. De hecho, estamos tan convencidos en la durabilidad de nuestros tejidos, que ofrecemos una garantía de 10 años (detalles completos disponibles). Tenga en cuenta que el rendimiento de la costura depende de la construcción de la costura, además de la aguja y del tipo de rosca. Le recomendamos que se aconsejen para coser la costura. Las variaciones de lote a lote en la sombra se puede producir dentro de tolerancias comerciales. Nos reservamos el derecho a efectuar modificaciones técnicas sin previo aviso. Los derechos sobre los diseños no registrados y los derechos de autor en todos los diseños son propiedad exclusiva de Camira Fabrics Limited.

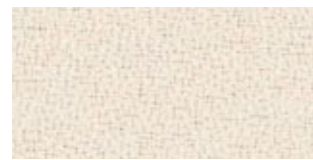




# SG1-Event



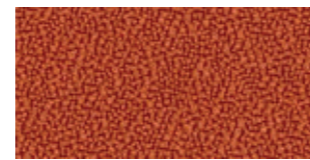
65017



60000



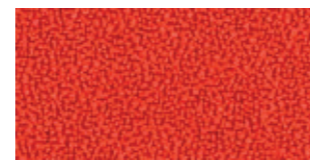
62013



63013



61032



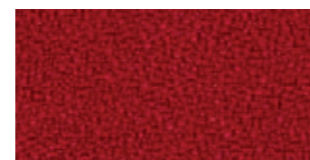
64032



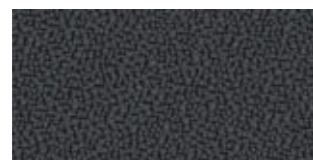
60022



61031



64031



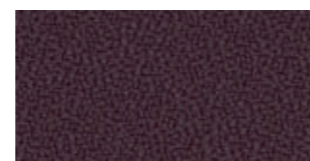
60023



64030

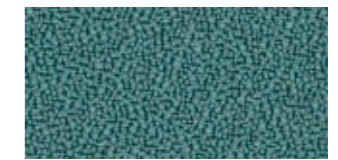


60999

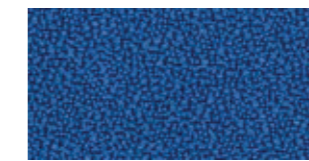


65017

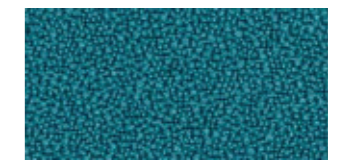
# www.uebel-einrichtungen.de



67019



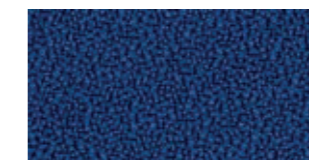
66035



67018



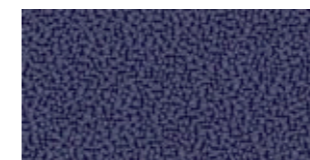
66038



66034



68033



65018



66036



68032



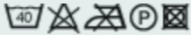

66033



66037



67020

EVENT SPECIFICATIONS		
<b>Design no.</b>	8598	
<b>Application</b>	contract	
<b>Composition</b>	100% polyester	
<b>Weight</b>	g/lm oz/lin.yd	420 13.55
<b>Width</b>	cm inches	140 55
<b>Abrasion</b>	rubs martindale (EN ISO 12947-2) double rubs wyzenbeek (ASTM D4157-07) (heavy duty upholstery)	100,000 100,000
<b>Pilling</b>	scale 1-5, max. 5 - EN ISO 12945-2	4-5
<b>Light fastness</b>	scale 1-8, max. 8 - EN ISO 105-B02	5-7
<b>Rubbing fastness</b>	scale 1-5, max. 5 - EN ISO 105x12 (wet/dry)	4-5/4-5
<b>Maintenance</b>	<p>wash or dry cleaning P(W).</p> <p>Event is made of polyester which is a synthetic material suited for environments with special requirements for cleaning.</p> <p><a href="#">click here for guidance relating to disinfection.</a></p> <p> 40°C shrinkage max. 0,5%.</p> <p> 60°C shrinkage max. 1,5%.</p>	
<b>US ACT</b>	<ul style="list-style-type: none"> <li>• <a href="#">AATCC 16 Light fastness</a> pass</li> <li>* <a href="#">ASTM D3511 Pilling</a> pass</li> <li>■ <a href="#">ASTM D4157-07 Wyz abrasion (heavy duty)</a> pass</li> <li>☞ <a href="#">CA TB 117-2013</a> pass</li> <li>☞ <a href="#">ASTM E 84 Class I</a> pass</li> <li>☞ <a href="#">AATCC 8 or 116 Wet/dry crocking</a> pass</li> </ul>	
<b>Flammability</b>	<p><a href="#">CA TB 117-2013</a> <a href="#">BS EN 1021 1&amp;2 Cigarette and Match</a> <a href="#">ASTM E 84 Class I</a></p> <p>Will also pass other flammability standards. Flame retardant performance is dependent upon the foam used.</p> <p>Contains no flame retardant chemicals.</p>	
<b>Certificates</b>	<div style="display: flex; gap: 10px;"> <div style="border: 1px solid #ccc; padding: 2px 5px;">Expand list</div> <div style="border: 1px solid #ccc; padding: 2px 5px;">Complete list</div> </div>	
<b>Environment</b>	STANDARD 100 by OEKO-TEX® EU Ecolabel	
<b>Design</b>	Inger Mosholt Nielsen	
<b>Colours</b>	Inger Mosholt Nielsen	



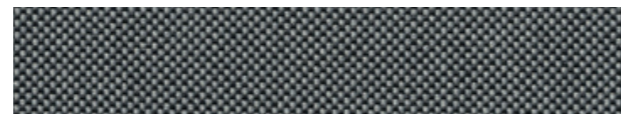


## SG1-Pure

[www.uebel-einrichtungen.de](http://www.uebel-einrichtungen.de)



MSM HK Pure 10



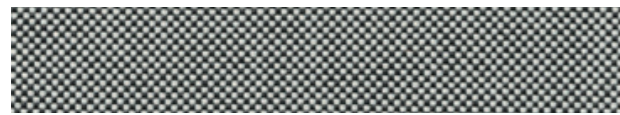
MSM HK Pure 11



MSM HK Pure 25



MSM HK Pure 30



MSM HK Pure 13



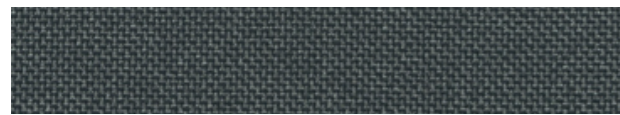
MSM HK Pure 14



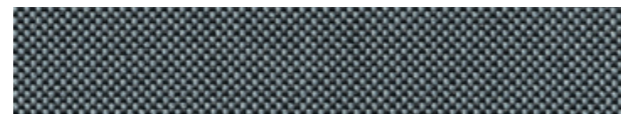
MSM HK Pure 31



MSM HK Pure 32



MSM HK Pure 15



MSM HK Pure 16



MSM HK Pure 40



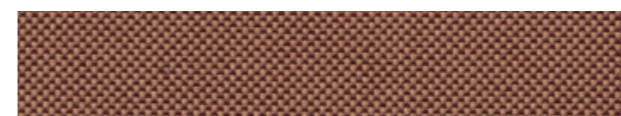
MSM HK Pure 41



MSM HK Pure 17



MSM HK Pure 18



MSM HK Pure 42



MSM HK Pure 43



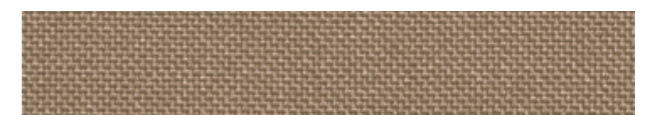
MSM HK Pure 19



MSM HK Pure 20



MSM HK Pure 44



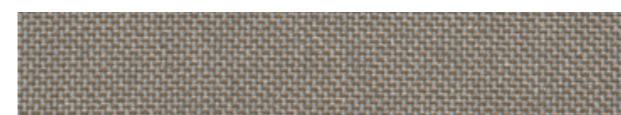
MSM HK Pure 45



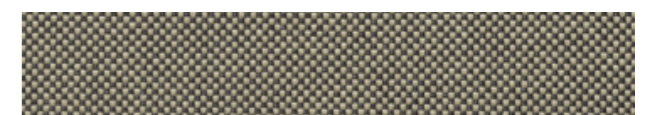
MSM HK Pure 21



MSM HK Pure 22



MSM HK Pure 46



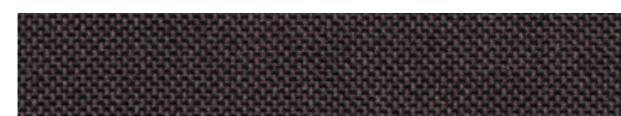
MSM HK Pure 47



MSM HK Pure 23



MSM HK Pure 24



MSM HK Pure 48



MSM HK Pure 50

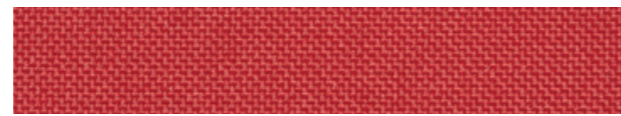


# SG1-Pure

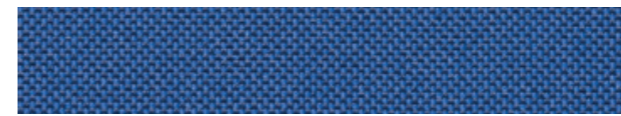
[www.uebel-einrichtungen.de](http://www.uebel-einrichtungen.de)



MSM HK Pure 51



MSM HK Pure 60



MSM HK Pure 73



MSM HK Pure 74



MSM HK Pure 61



MSM HK Pure 62



MSM HK Pure 75



MSM HK Pure 76



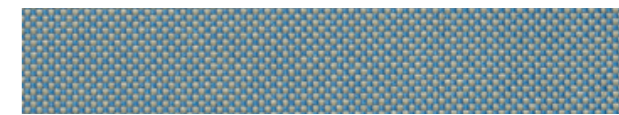
MSM HK Pure 63



MSM HK Pure 64



MSM HK Pure 77



MSM HK Pure 78



MSM HK Pure 65



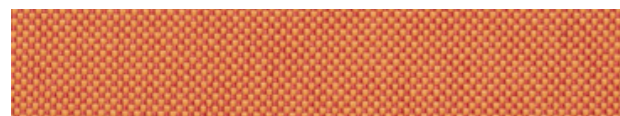
MSM HK Pure 66



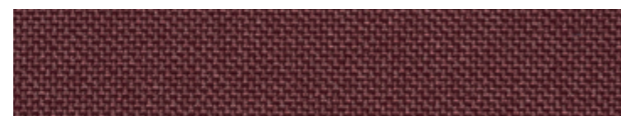
MSM HK Pure 79



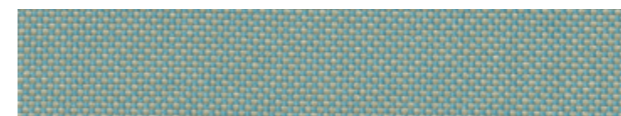
MSM HK Pure 80



MSM HK Pure 67



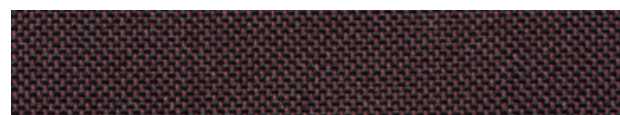
MSM HK Pure 68



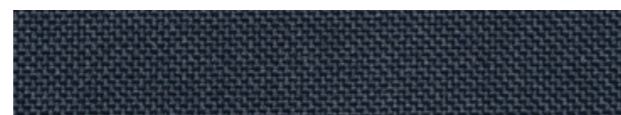
MSM HK Pure 81



MSM HK Pure 82



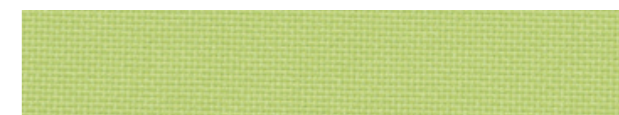
MSM HK Pure 69



MSM HK Pure 70



MSM HK Pure 090



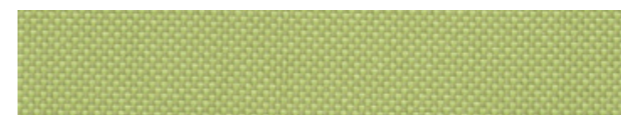
MSM HK Pure 091



MSM HK Pure 71



MSM HK Pure 72



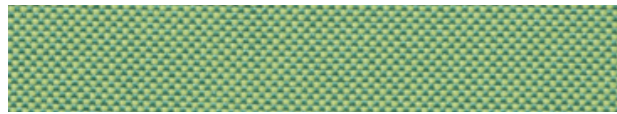
MSM HK Pure 092



MSM HK Pure 093



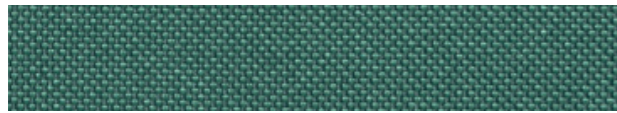
## SG1-Pure



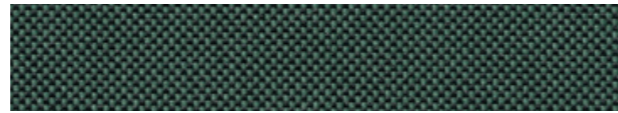
MSM HK Pure 094



MSM HK Pure 095



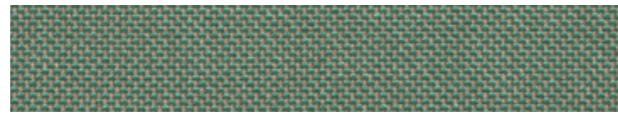
MSM HK Pure 096



MSM HK Pure 097



MSM HK Pure 098



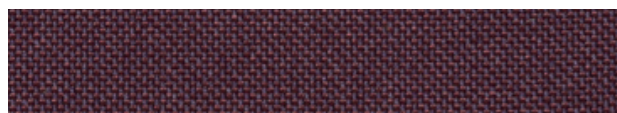
MSM HK Pure 099



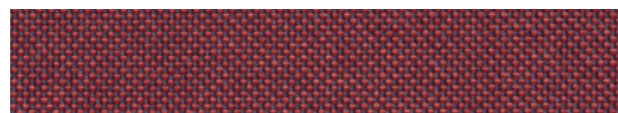
MSM HK Pure 110



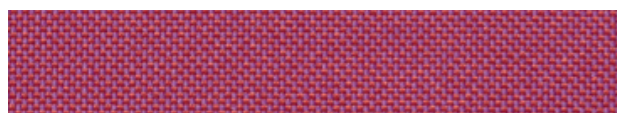
MSM HK Pure 111



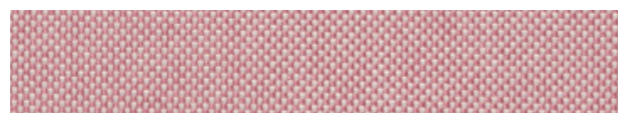
MSM HK Pure 610



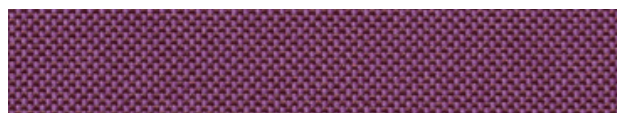
MSM HK Pure 611



MSM HK Pure 612



MSM HK Pure 613

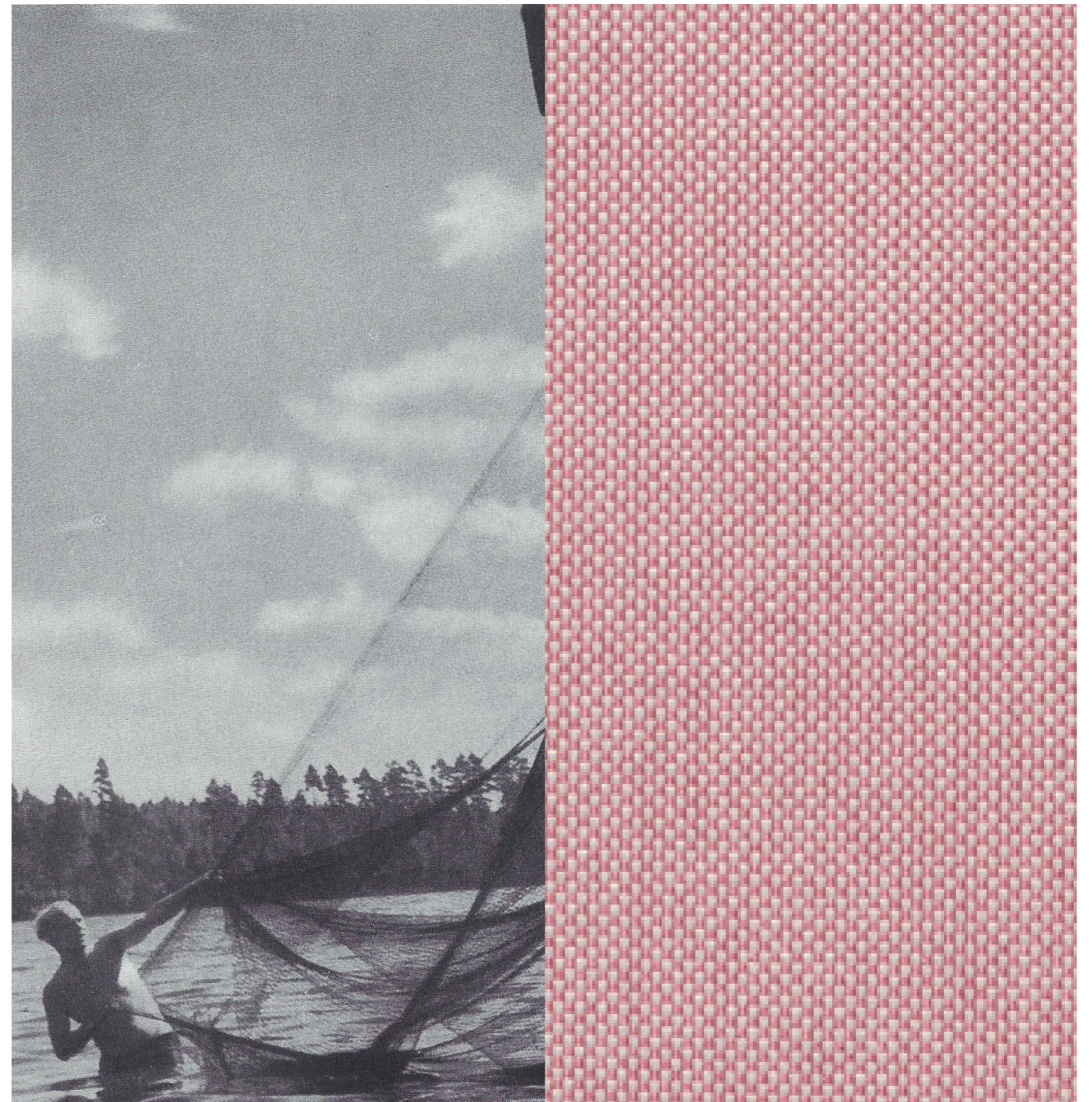


MSM HK Pure 614



MSM HK Pure 615

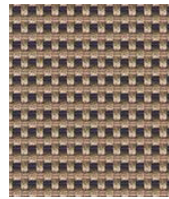
[www.uebel-einrichtungen.de](http://www.uebel-einrichtungen.de)



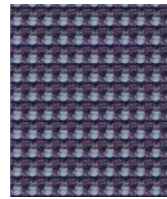


# SG2-Château

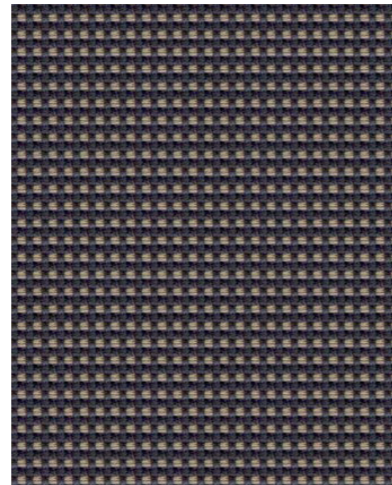
[www.uebel-einrichtungen.de](http://www.uebel-einrichtungen.de)



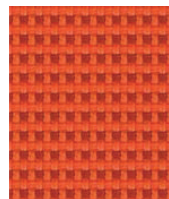
**Pomerol**  
CSP01



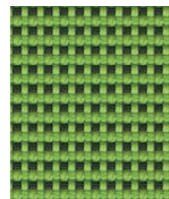
**Perigord**  
CSP38



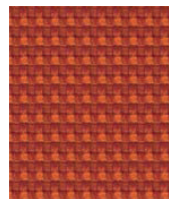
**Medoc**  
CPS02



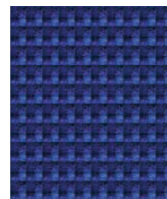
**Brissac**  
CSP03



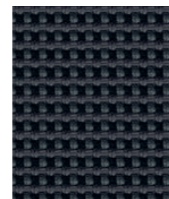
**Tarascon**  
CSP29



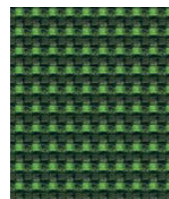
**Noizay**  
CSP04



**Chinon**  
CSP09



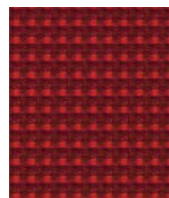
**Palice**  
CSP19



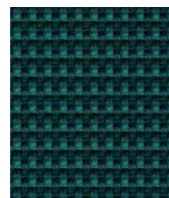
**Vincennes**  
CSP31



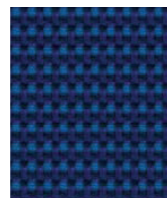
**Trianons**  
CSP39



**Dollard**  
CSP07



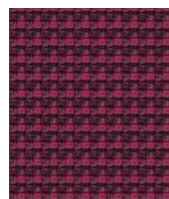
**Motte**  
CSP14



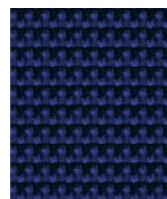
**Biron**  
CSP15



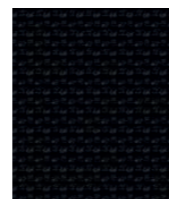
**Hazeville**  
CSP20



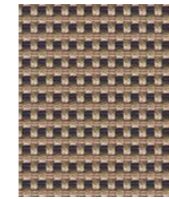
**Rideau**  
CSP33



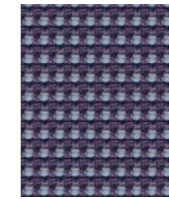
**Bonpas**  
CSP11



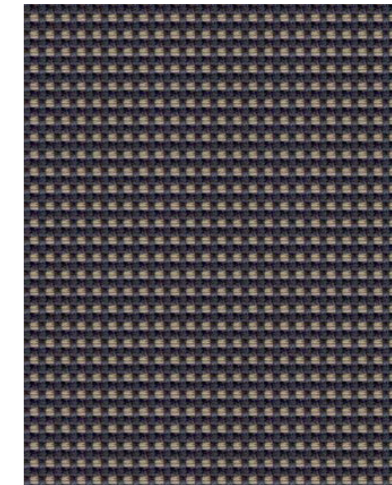
**Beauvois**  
CSP48



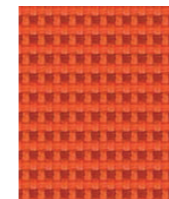
**Pomerol**  
CSP01



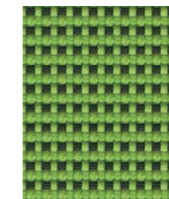
**Perigord**  
CSP38



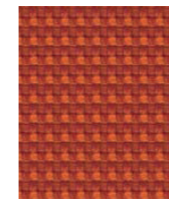
**Medoc**  
CPS02



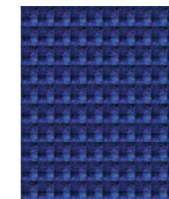
**Brissac**  
CSP03



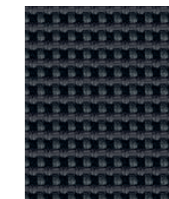
**Tarascon**  
CSP29



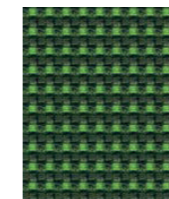
**Noizay**  
CSP04



**Chinon**  
CSP09



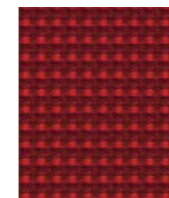
**Palice**  
CSP19



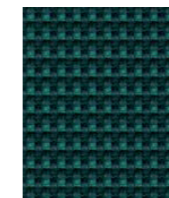
**Vincennes**  
CSP31



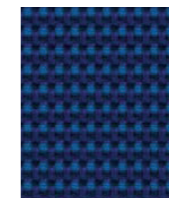
**Trianons**  
CSP39



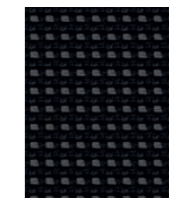
**Dollard**  
CSP07



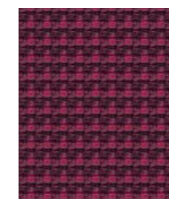
**Motte**  
CSP14



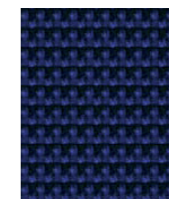
**Biron**  
CSP15



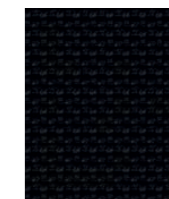
**Hazeville**  
CSP20



**Rideau**  
CSP33



**Bonpas**  
CSP11



**Beauvois**  
CSP48



## SG2-Château



Hopsack upholstery fabric Château, comprises cross-colours and plain shades which work together to create a contemporary look for task chairs. It's extremely durable and the zesty colour palette will maintain its vibrancy over time.



### Technical information

#### UK

**Industry Application**  
Workplace, Education

**Composition**  
100% Flame Retardant Polypropylene

**Width**  
140 cm minimum

**Weight**  
225 g/m<sup>2</sup> ±5% (315 g/lin.m ±5%)

**Abrasion Resistance\***  
Heavy duty / 10 year guarantee  
Independently certified to ≥30,000  
Martindale cycles

**Flammability**  
EN 1021 - 1 (cigarette)  
EN 1021 - 2 (match)  
BS 7176 Low Hazard  
DIN 4102 B1  
ÖNORM A 3800 – 1  
UNI 9175 Classe 1 IM  
EN 13501-1 Adhered Class B, s1, d0  
EN 13501-1 Un-adhered Class B, s1, d2  
*Note: Flammability performance is dependent on components used. Our certificates show what substrates have been used in our tests. For composite tests customers must ensure their complete furniture meets the necessary standards.*

**Light Fastness**  
6 (ISO 105 - B02)

**Fastness to Rubbing**  
Wet: 4, Dry: 4 (ISO 105 - X12)

**Cleaning**  
Vacuum regularly. Wipe clean with a damp cloth or shampoo using proprietary upholstery shampoo.

\*Martindale abrasion testing alone is not an appropriate indicator for the durability of this product. The heat generated by this test far exceeds normal practice and affects the constituent fibre. The robust performance of this product is proven in use with a 10 year guarantee of durability. Please note that seam performance is dependent on seam construction and needle and thread type. We recommend that appropriate sewing advice be taken. Batch to batch variations in shade may occur within commercial tolerances. We reserve the right to alter technical specifications without notice. The Unregistered Design Rights and the Copyright in all designs are the exclusive property of Camira Fabrics Limited.

#### D

**Einsatzbereich**  
Büro, Bildung

**Zusammensetzung**  
100% schwerentflammbares Polypropylen

**Breite**  
140 cm nutzbare Breite

**Gewicht**  
225 g/m<sup>2</sup> ±5% (315 g/ldf.m ±5%)

**Scheuerfestigkeit\***  
Schwerer Objekteinsatz / 10 Jahre Garantie  
Extern zertifiziert mit ≥30,000  
Scheuertouren Martindale

**Feuersicherung**  
EN 1021 - 1 (Zigarettentest)  
EN 1021 - 2 (Streichholztest)  
BS 7176 Low Hazard  
DIN 4102 B1  
ÖNORM A 3800 – 1  
UNI 9175 Classe 1 IM  
EN 13501-1 Adhered Class B, s1, d0  
EN 13501-1 Un-adhered Class B, s1, s2  
*Bemerkung: Die Schwerentflammbarkeit hängt von den verwendeten Komponenten ab. Unsere Zertifikate zeigen auf, welche Substrate bei den Tests verwendet wurden. Bei Verbundtests muss sichergestellt sein, daß das komplette Möbel den entsprechenden Standards entspricht.*

**Lichtechtheit**  
6 (ISO 105 - B02)

**Reibechtheit**  
Nass: 4, Trocken: 4 (ISO 105 - X12)

**Reinigung**  
Regelmässig staubsaugen. Dazu mit einem feuchten Tuch abwischen, oder mit einem speziellen Polsterschaum behandeln.

\*Der Martindale-Test allein ist kein Nachweis für die Langlebigkeit des Produktes. Die hohen Temperaturen des Tests beeinträchtigen die Faser und sind im Einsatz ausgeschlossen. Die langjährige Robustheit des Produktes wird mit 10 Jahren Garantie bestätigt. Eine optimale Nahtausreisfestigkeit hängt von der Nahtfahne, der verwendeten Nadel und dem Näh-Garn ab. Wir empfehlen daher Nähversuche durchzuführen. Handelsübliche Farbabweichungen können auftreten und berechtigen nicht zur Reklamation. Wir behalten uns die Änderung technischer Spezifikationen vor. Die registrierten und nicht registrierten Urheberrechte der Dessinierungen sind ausschliessliches Eigentum der Camira Fabrics Limited.

#### F

**Application industrielle**  
Lieu de travail, Education

**Composition**  
100% Polypropylène retardateur de flamme

**Largeur**  
140 cm minimum

**Poids**  
225 g/m<sup>2</sup> ±5% (315 g/m.l ±5%)

**Résistance à l'abrasion\***  
Usage intense / garantie 10 ans. Certificat indépendant ≥30,000 cycles Martindale

**Flammabilité**  
EN 1021 - 1 (cigarette)  
EN 1021 - 2 (allumette)  
BS 7176 Low Hazard  
DIN 4102 B1  
ÖNORM A 3800 – 1  
UNI 9175 Classe 1 IM  
EN 13501-1 Adhered Class B, s1, d0  
EN 13501-1 Un-adhered Class B, s1, d2  
*Notez: La performance de flammabilité dépend des composantes utilisées. Nos certificats indiquent les substrats utilisés dans nos tests. Pour les tests composites, les clients doivent s'assurer que leurs meubles complets satisfont aux normes nécessaires.*

**Solidité à la lumière**  
6 (ISO 105 - B02)

**Solidité au Frottement**  
Mouillé: 4, Sec: 4 (ISO 105 - X12)

**Nettoyage**  
Aspirer régulièrement. Essuyer avec une étoffe humide ou nettoyer à l'aide d'un produit approprié pour tissus d'ameublement.

\*Le test martindale n'est pas un indicateur réaliste pour la durabilité de ce tissu polypropylène. En effet la chaleur générée lors de ce test est considérablement au-dessus de l'usage normal et change les caractéristiques de la fibre. La performance robuste de cette qualité se manifeste pendant l'usage et est enterrinée par une garantie de 10 ans. Veuillez noter que la performance du joint dépend de sa construction ainsi que de l'aiguille et du type de fil utilisés. Une variation de couleurs peut provenir (commerciallement tolérable). Nous réservons le droit de changer les spécifications techniques sans préavis. Les Droits de Conception non-enregistrés et les droits d'auteur de tous les motifs sont la propriété exclusive de Camira Fabrics Limited.

#### ES

**Aplicación Industrial**  
Puesto de Trabajo, Educación

**Composición**  
100% Polipropileno resistente al fuego

**Ancho**  
140 cm mínimo

**Peso**  
225 g/m<sup>2</sup> ±5% (315 g/lin.m ±5%)

**Resistencia a la abrasión\***  
Garantía de 10 años con uso intenso independientemente del certificado de ≥30,000 Ciclos Martindale

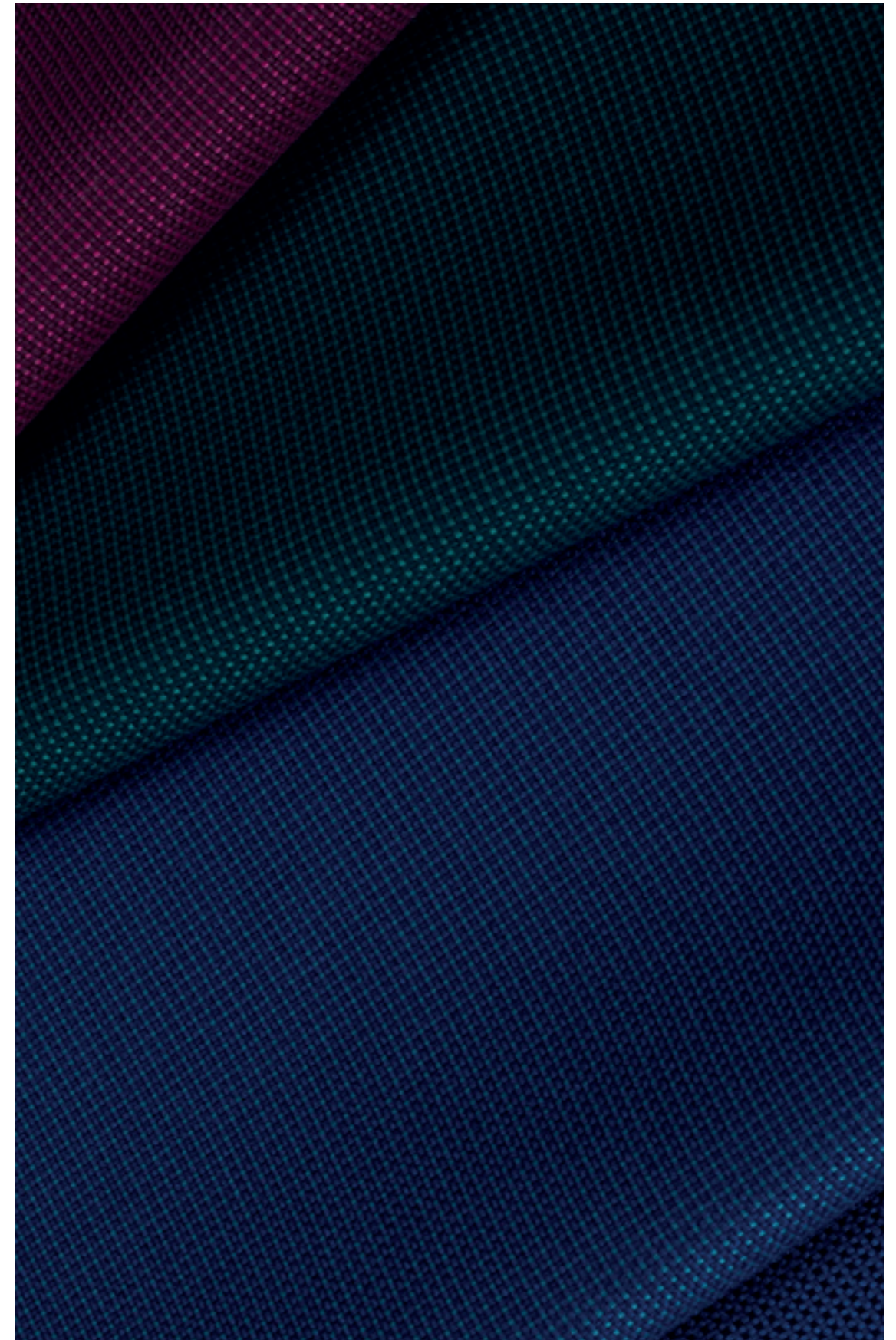
**Inflamabilidad**  
EN 1021 - 1 (cigarillo)  
EN 1021 - 2 (cerilla)  
BS 7176 Low Hazard  
DIN 4102 B1  
ÖNORM A 3800 – 1  
UNI 9175 Classe 1 IM  
EN 13501-1 Adhered Class B, s1, d0  
EN 13501-1 Un-adhered Class B, s1, d2  
*Nota: El rendimiento de la inflamabilidad depende de los componentes usados. Nuestros certificados muestran qué substratos se han usado en nuestros tests. Para tests compuestos nuestros clientes deben asegurar si sus muebles cumplen la normativa al uso.*

**Solidez a la luz**  
6 (ISO 105 - B02)

**Solidez al rozamiento**  
Húmedo: 4, Seco: 4 (ISO 105 - X12)

**Limpieza**  
Limpiar con aspiradora frecuentemente. Bien lavar con un paño húmedo o con un champú apropiado para tapicería.

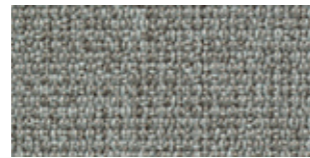
\*El test de Abrasión Martindale no es el más adecuado para indicar la durabilidad de este producto. El calor que genera este test es demasiado y afecta negativamente a las fibras de este producto. En cualquier caso, la durabilidad y calidad del producto está de sobra probada ya que damos 10 años de garantía. Tenga en cuenta que el rendimiento de la costura depende de la construcción de la costura, además de la aguja y del tipo de rosca. Le recomendamos que se aconsejen para coser la costura. Las variaciones de lote a lote en la sombra se puede producir dentro de tolerancias comerciales. Nos reservamos el derecho a efectuar modificaciones técnicas sin previo aviso. Los derechos sobre los diseños no registrados y los derechos de autor en todos los diseños son propiedad exclusiva de Camira Fabrics Limited.





# SG2-Medley

[www.uebel-einrichtungen.de](http://www.uebel-einrichtungen.de)



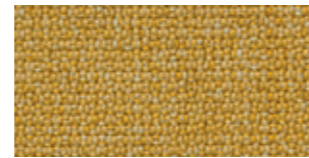
60003



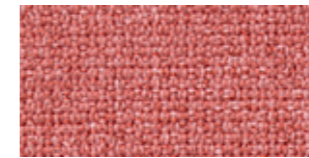
61189



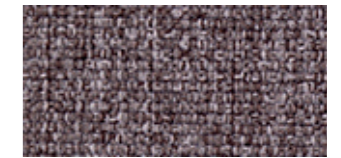
66008



62054



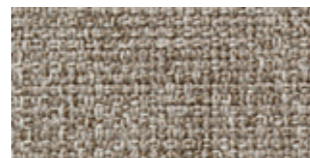
63064



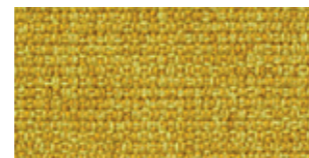
65011



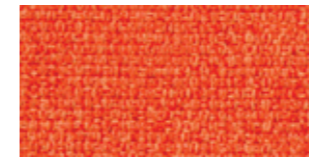
60167



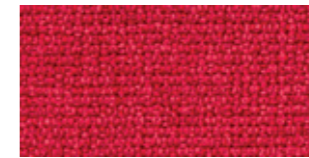
61002



62002



63013



64019



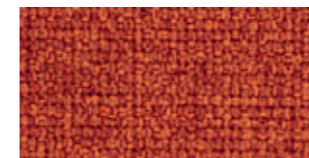
60004



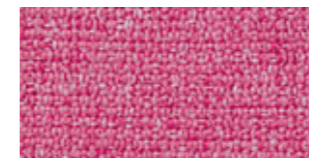
61003



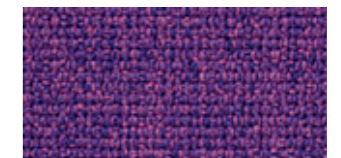
67002



63017



64124



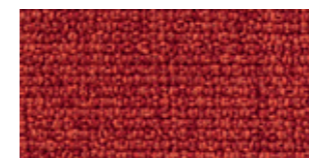
65012



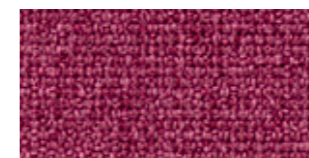
60999



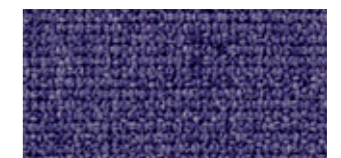
61004



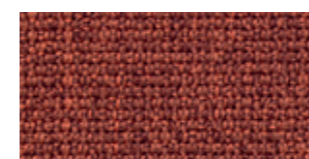
63016



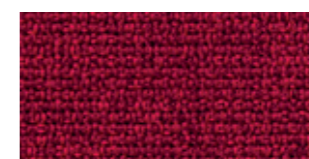
64125



65086



63063



64123



66145



# SG2-Medley



63063



68114



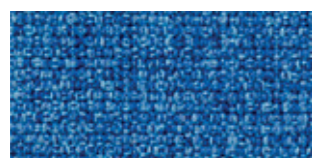
67052



67006



68115



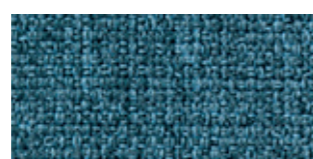
66009



67054



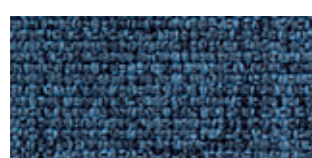
66144



67053



68002



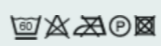
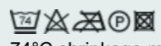
66010



66007



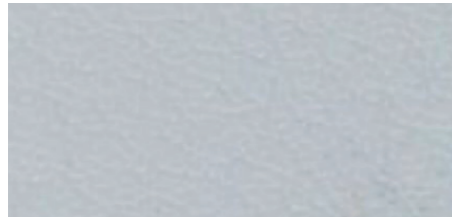
68005

MEDLEY SPECIFICATIONS	
Design no.	8613
Application	contract soft seating
Composition	100% polyester
Weight	g/lm 510 oz/lin.yd 16.45
Width	cm 140 inches 55
Abrasion	rubs martindale (EN ISO 12947-2) 75,000 double rubs wyzenbeek (ASTM D4157-07) (heavy duty upholstery) 100,000
Pilling	scale 1-5, max. 5 - EN ISO 12945-2 4
Light fastness	scale 1-8, max. 8 - EN ISO 105-B02 5-7
Rubbing fastness	scale 1-5, max. 5 - EN ISO 105x12 (wet/dry) 4-5/4-5
Maintenance	wash or dry cleaning P(W)  Medley is made of polyester which is a material suited for environments with special requirements for cleaning.  <a href="#">click here for guidance relating to disinfection.</a>   60°C shrinkage max. 1%.   74°C shrinkage max. 3%.
US ACT	<ul style="list-style-type: none"> <li>● AATCC 16 Light fastness pass</li> <li>● AATCC 8 or 116 Wet/dry crocking pass</li> <li>★ ASTM D3511 Pilling pass</li> <li>■ ASTM D4157-07 Wyz abrasion (heavy duty) pass</li> <li>● CA TB 117-2013 pass</li> <li>● ASTM E 84 Class I pass</li> </ul>
Acoustic test air flow resistance	EN 29053 & ISO 9053-1 (airflow resistance)
Acoustic test sound absorption	ISO 354 & ISO 11654 (sound absorption)
Flammability	BS EN 1021 1&2 Cigarette and Match BS EN 1021-1 Cigarette BS 5852 Part 1 0.1 Cigarette & match BS 476 Part 7, class 2 Class Uno UNI 9174 - UNI 8457 ÖNORM A3825-B2-B3800-Q1 UK CA TB 117-2013 ASTM E 84 Class I Will also pass other flammability standards. Flame retardant performance is dependent upon the foam used. Contains no flame retardant chemicals.
Certificates	<div style="display: flex; justify-content: space-between;"> <span>Expand list</span> <span>Complete list</span> </div>
Environment	STANDARD 100 by OEKO-TEX®
Design	Mette Krebs Petersen
Colours	Mette Krebs Petersen

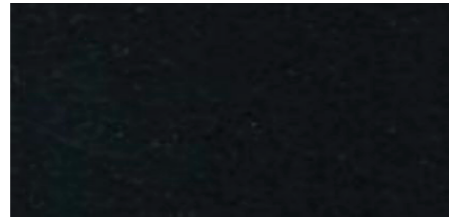


## SG3-HK-Kunstleder

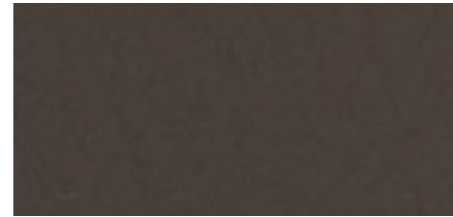
[www.uebel-einrichtungen.de](http://www.uebel-einrichtungen.de)



MSM HK 207 x 2395



MSM HK 207 x 2782



MSM HK 207 x 2793



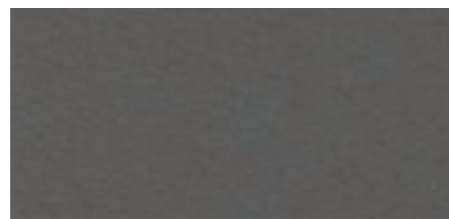
MSM HK 207 x 2798



MSM HK 207 x 2799



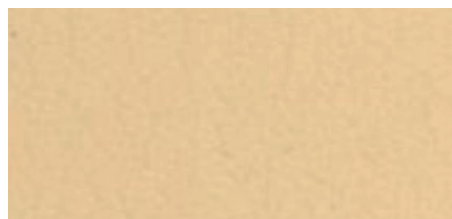
MSM HK 207 x 3105



MSM HK 207 x 3271



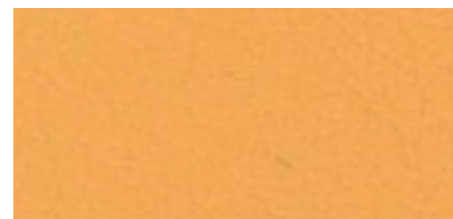
MSM HK 208 x 1011



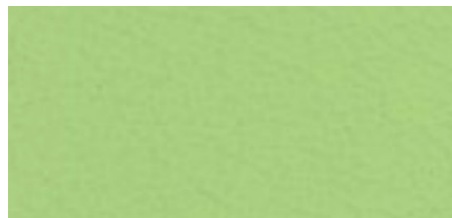
MSM HK 208 x 1241



MSM HK 208 x 2203



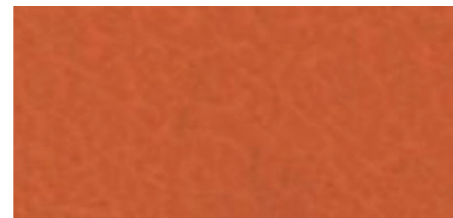
MSM HK 208 x 2388



MSM HK 208 x 2394



MSM HK 208 x 2392



MSM HK 208 x 2794





# SG3-Xtreme

[www.uebel-einrichtungen.de](http://www.uebel-einrichtungen.de)



**Adobo**  
YS165



**Solano**  
YS072



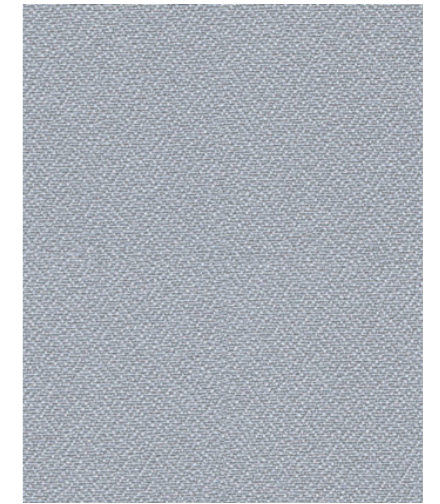
**Parasol**  
YS073



**Steel**  
YS095



**Madura**  
YS156



**Rum**  
YS173



**Aruba**  
YS108



**Tortuga**  
YS168



**Bridgetown**  
YS102



**Bluebell**  
YS097



**Campeche**  
YS074



**Apple**  
YS096



**Sandstorm**  
YS071



**Lobster**  
YS076



**Belize**  
YA105



**Diablo**  
YS101



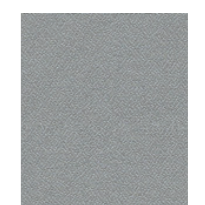
**Martinique**  
YS004



**Lombok**  
YS159



**Appledore**  
YS077



**Slip**  
YS094



**Nougat**  
YS091



**Panama**  
YS079



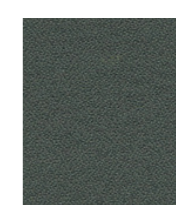
**Honeymoon**  
YS035



**Scuba**  
YS082



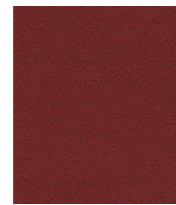
**Tonga**  
YS160



**Krabi**  
YS141



**Osumi**  
YS171



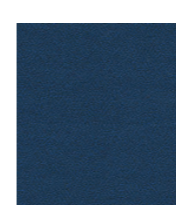
**Tokara**  
YS136



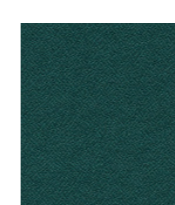
**Tarot**  
YS084



**Ocean**  
YS100



**Curacao**  
YS005



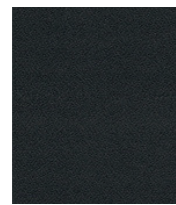
**Windjammer**  
YS047



**Blizzard**  
YS081



**Padang**  
YS145



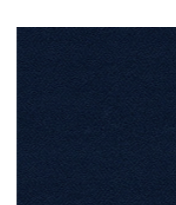
**Sombrero**  
YS046



**Tobago**  
YS030



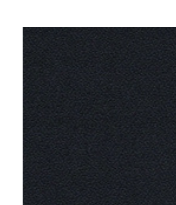
**Cayman**  
YS024



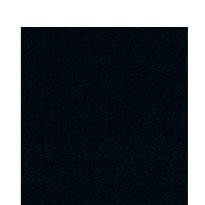
**Costa**  
YS026



**Taboo**  
YS045



**Bonaire**  
YS172



**Havana**  
YS009



# SG3-Xtreme



Xtreme is a modern crepe weave fabric made from 100% post-consumer recycled polyester, diverting waste from landfill and saving virgin raw materials. Its stretch properties, coupled with high flame retardancy, durability and non-pilling properties make Xtreme an ever popular fabric for task seating.



## Technical information

### UK

#### Industry Application

Workplace, Education, Hospitality & Leisure  
When TriOnyx treated: Healthcare

#### Composition

100% post-consumer recycled polyester

#### Environment

Certified to the EU Ecolabel  
Certified to OEKO-TEX® Standard 100  
Certified to Indoor Advantage™ Gold  
Made from 100% recycled polyester  
Non metallic dyestuffs

#### Width

140 cm minimum

#### Weight

310 g/m<sup>2</sup> ±5% (435 g/lin.m ±5%)

#### Abrasion Resistance\*

Heavy duty / 10 year guarantee  
Independently certified to ≥100,000 Martindale cycles

#### Flammability

EN 1021 - 1 (cigarette)  
EN 1021 - 2 (match)  
BS 7176 Low Hazard  
BS 5852 Ignition Source 5  
BS 7176 Medium Hazard  
DIN 4102 B1  
NF D 60-013

ÖNORM B 3825 & A 3800-1 (over 58 kg/m<sup>3</sup> CMHR foam)  
UNI 9175 Classe 1 IM

BS 476 Part 7 Class 1 (Adhered)

*Note: Flammability performance is dependent on components used. Our certificates show what substrates have been used in our tests. For composite tests customers must ensure their complete furniture meets the necessary standards.*

#### Light Fastness

6 (ISO 105 - B02)

#### Fastness to Rubbing

Wet: 4, Dry: 4 (ISO 105 - X12)

#### Cleaning

Washable to 60°C. Vacuum regularly.  
Wipe clean with a damp cloth or shampoo using proprietary upholstery shampoo.

\*Abrasion testing produces a wide variability of results even from the same test sample. The independent certificate of ≥100,000 cycles is available on our website or from our customer service team. Internally we also specify this product at >100,000 cycles which we believe is realistic for repeatability of testing. Please be aware that abrasion testing alone is not a reliable indicator of the actual wear performance of fabrics. We're so confident in the durability of our products that we provide a robust 10 year guarantee (full details available).  
Please note that seam performance is dependent on seam construction and needle and thread type. We recommend that appropriate sewing advice be taken.  
Batch to batch variations in shade may occur within commercial tolerances. We reserve the right to alter technical specifications without notice. The Unregistered Design Rights and the Copyright in all designs are the exclusive property of Camira Fabrics Limited.

### D

#### Einsatzbereich

Büro, Bildung, Hotellerie & Gastronomie  
Wenn mit TriOnyx ausgerüstet:  
Gesundheit & Pflege

#### Zusammensetzung

100% post-consumer recycelten Polyester

#### Umweltfreundlich

Nach Zertifikat EU Ecolabel  
Nach Zertifikat OEKO-TEX® Standard 100  
Nach Zertifikat Indoor Advantage™ Gold  
Hergestellt aus 100% recycelten Polyester  
Nicht schwermetallhaltige Farbstoffe

#### Breite

140 cm nutzbare Breite

#### Gewicht

310 g/m<sup>2</sup> ±5% (435 g/ffd.m ±5%)

#### Scheuerfestigkeit\*

Schwerer Objekteinsatz /  
10 Jahre Garantie  
Extern zertifiziert mit ≥100,000 Scheuertouren Martindale

#### Feuersicherung

EN 1021 - 1 (Zigarettentest)  
EN 1021 - 2 (Streichholztest)  
BS 7176 Low Hazard  
BS 5852 Ignition Source 5  
BS 7176 Medium Hazard  
DIN 4102 B1  
NF D 60-013

ÖNORM B 3825 & A 3800-1 (mit 58 kg/m<sup>3</sup> CMHR Schaum)  
UNI 9175 Classe 1 IM

BS 476 Part 7 Class 1 (Adhered)

*Bemerkung: Die Schwerentflammbarkeit hängt von den verwendeten Komponenten ab. Unsere Zertifikate zeigen auf, welche Substrate bei den Tests verwendet wurden. Bei Verbundtests muss sichergestellt sein, daß das komplette Möbel den entsprechenden Standards entspricht.*

#### Lichtechtheit

6 (ISO 105 - B02)

#### Reibechtheit

Nass: 4, Trocken: 4 (ISO 105 - X12)

#### Reinigung

Washable bis 60°C. Regelmässig staubsaugen. Dazu mit einem feuchten Tuch abwischen, oder mit einem speziellen Polsterschaum behandeln.

\*Die Scheuerfestigkeitsprüfung ergibt selbst bei gleichen Testmustern stark abweichende Ergebnisse. Das Zertifikat eines unabhängigen Prüfinstitutes über ≥100,000 Scheuertouren erhalten Sie von unserem Vertriebsinnendienst oder auf unserer Webseite. Intern spezifizieren wir auch dieses Produkt mit >100,000 Scheuertouren, die in der Serienfertigung als realistisch angenommen werden. Bitte nehmen Sie zur Kenntnis, dass die Scheuerfestigkeitsprüfung allein keine Aussagekraft über die Langlebigkeit eines Bezugsstoffes hat. Wir sind von der Langlebigkeit unserer Produkte überzeugt und bieten daher 10 Jahre Garantie (Details auf Anfrage).  
Eine optimale Nahtausrüstfestigkeit hängt von der Nahtfahne, der verwendeten Nadel und dem Näh-Garn ab. Wir empfehlen daher Nähversuche durchzuführen.  
Handelsübliche Farbabweichungen können auftreten und berechtigen nicht zur Reklamation.  
Wir behalten uns die Änderung technischer Spezifikationen vor. Die registrierten und nicht registrierten Urheberrechte der Dessinierungen sind ausschliessliches Eigentum der Camira Fabrics Limited.

### F

#### Application Industrielle

Lieu de travail, Éducation, Hôtellerie et loisirs  
Si traitement TriOnyx: Services de santé

#### Composition

100% polyester recyclé post-consommation

#### Écologique

Avec le certificat EU Ecolabel  
Certifié à OEKO-TEX® Standard 100  
Certifié à Indoor Advantage™ Gold  
Fabriqué d'un polyester 100% recyclé  
Teintures non métalliques

#### Largeur

140 cm minimum

#### Poids

310 g/m<sup>2</sup> ±5% (435 g/m.l ±5%)

#### Résistance à l'abrasion\*

Usage intense / garantie 10 ans.  
Certificat indépendant ≥100,000 cycles Martindale

#### Flammabilité

EN 1021 - 1 (cigarette)  
EN 1021 - 2 (allumette)  
BS 7176 Low Hazard  
BS 5852 Ignition Source 5  
BS 7176 Medium Hazard  
DIN 4102 B1  
NF D 60-013

ÖNORM B 3825 & A 3800-1 (sur 58 kg/m<sup>3</sup> CMHR mousse)  
UNI 9175 Classe 1 IM

BS 476 Part 7 Class 1 (Adhered)

*Notez: La performance de flammabilité dépend des composantes utilisées. Nos certificats indiquent les substrats utilisés dans nos tests. Pour les tests composites, les clients doivent s'assurer que leurs meubles complets satisfont aux normes nécessaires.*

#### Solidité à la lumière

6 (ISO 105 - B02)

#### Solidité au Frottement

Mouillé: 4, Sec: 4 (ISO 105 - X12)

#### Nettoyage

Lavable jusqu'à 60°C. Aspirer régulièrement. Essuyer avec une étoffe humide ou nettoyer à l'aide d'un produit approprié pour tissus d'ameublement.

\*Les tests de résistance à l'abrasion proposent une large variété de résultat final, parfois sur le même échantillon de tissu. Le certificat indépendant de ≥100,000 cycles est disponible sur notre site internet; vous pouvez également contacter notre Service Clients. Nous validons également – en interne – à >100,000 cycles; ce qui est, d'après nous, plus réaliste dans le but d'obtenir une continuité égale des résultats de tests. Merci de noter que l'abrasion seule ne constitue pas un indicateur de confiance dans la performance du tissu à long terme. Nous avons une confiance absolue en nos produits et leur durabilité, c'est pour cela que nous vous offrons une garantie robuste de 10 ans.  
Veuillez noter que la performance du joint dépend de sa construction ainsi que de l'aiguille et du type de fil utilisés.  
Une variation de couleurs peut provenir (commercialement tolérable). Nous réservons le droit de changer les spécifications techniques sans préavis. Les Droits de Conception non-enregistrés et les droits d'auteur de tous les motifs sont la propriété exclusive de Camira Fabrics Limited.

### ES

#### Aplicación Industrial

Puesto de Trabajo, Educación, Sector Hotelero & Placer  
Estando con tratamiento TriOnyx:  
Sanidad

#### Composición

Polyester reciclado 100% post consumido

#### Ambiental

Certificado con EU Ecolabel  
Certificado de OEKO-TEX® Standard 100  
Certificado de Indoor Advantage™ Gold  
Hecho de 100% de poliéster reciclado  
Tintes no metálicos

#### Ancho

140 cm mínimo

#### Peso

310 g/m<sup>2</sup> ±5% (435 g/lin.m ±5%)

#### Resistencia a la abrasión\*

Garantía de 10 años con uso intenso independientemente del certificado de ≥100,000 Ciclos Martindale

#### Inflamabilidad

EN 1021 - 1 (cigarillo)  
EN 1021 - 2 (cerilla)  
BS 7176 Low Hazard  
BS 5852 Ignition Source 5  
BS 7176 Medium Hazard  
DIN 4102 B1  
NF D 60-013

ÖNORM B 3825 & A 3800-1 (con CMHR 58 kg/m<sup>3</sup> de espuma)  
UNI 9175 Classe 1 IM

BS 476 Part 7 Class 1 (Adhered)

*Note: El rendimiento de la inflamabilidad depende de los componentes usados. Nuestros certificados muestran qué substratos se han usado en nuestros tests. Para tests compuestos nuestros clientes deben asegurar si sus muebles cumplen la normativa al uso.*

#### Solidez a la luz

6 (ISO 105 - B02)

#### Solidez al rozamiento

Húmedo: 4, Seco: 4 (ISO 105 - X12)

#### Limpieza

Lavable hasta 60°C. Limpiar con aspiradora frecuentemente. Bien lavar con un paño húmedo o con un champú apropiado para tapicería.

\*Los Test de Abrasión producen unos resultados muy variables incluso con la misma muestra. El certificado de ≥100,000 ciclos Martindale está disponible en nuestra web o se puede pedir al Departamento Comercial. Internamente también certificamos este producto >100,000 ciclos, que pensamos que es lo más realista posible en este caso, con una repetición de resultados tan dispares. Tengan en cuenta que el Test de Abrasión solo no es un indicador fiable sobre el desgaste de un tejido. De hecho, estamos tan convencidos en la durabilidad de nuestros tejidos, que ofrecemos una garantía de 10 años (detalles completos disponibles).  
Tenga en cuenta que el rendimiento de la costura depende de la construcción de la costura, además de la aguja y del tipo de rosca. Le recomendamos que se aconsejen para coser la costura.  
Las variaciones de lote a lote en la sombra se puede producir dentro de tolerancias comerciales. Nos reservamos el derecho a efectuar modificaciones técnicas sin previo aviso. Los derechos sobre los diseños no registrados y los derechos de autor en todos los diseños son propiedad exclusiva de Camira Fabrics Limited.

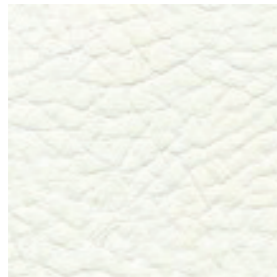
www.uebel-einrichtungen.de



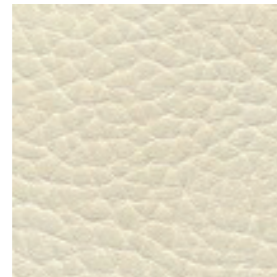


# SG-4-SkaiParotega

[www.uebel-einrichtungen.de](http://www.uebel-einrichtungen.de)



weiss F6461652



hellbeige F6461632



kiesel F6461653



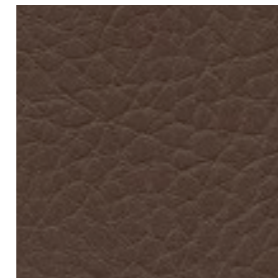
sattel F6461733



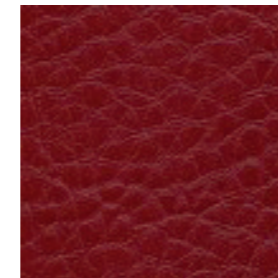
perle F6461662



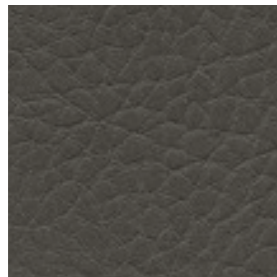
birke F6461661



cappuccino F6461762 New



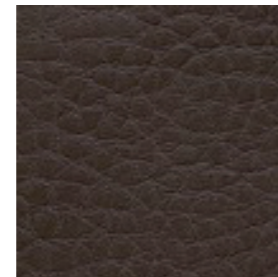
marone F6461655



cinder F6461763 New



smoke F6461660



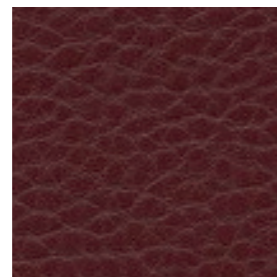
olivbraun F6461704



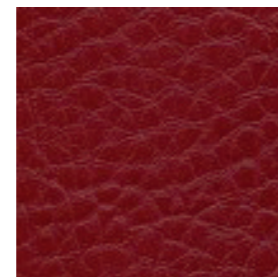
schoko F6461656



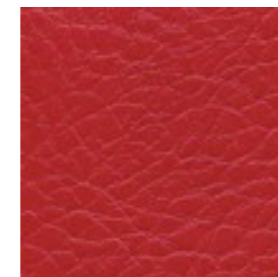
light rosé F6461764 New



marsala F6461765 New



kirsche F6461665 \*



feuer F6461707



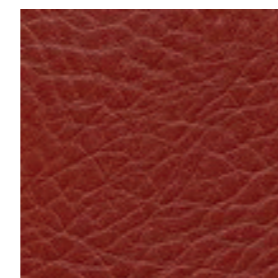
cashmere F6461737



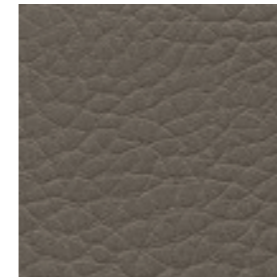
mango F6461666



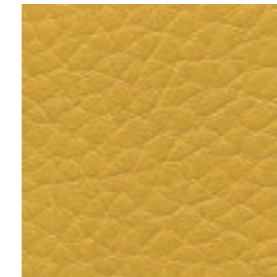
sherry F6461654



lachs F6461702



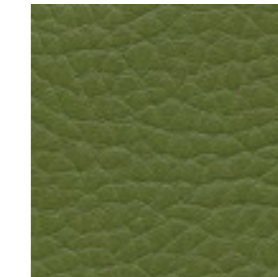
fango F6461658



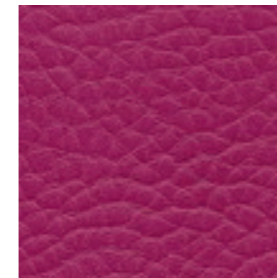
mais F6461706



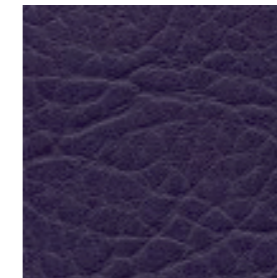
limone F6461657



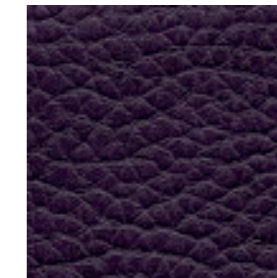
olivgrün F6461705



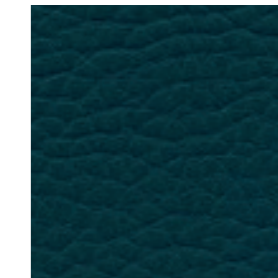
fuchsia F6461735



lila F6461736



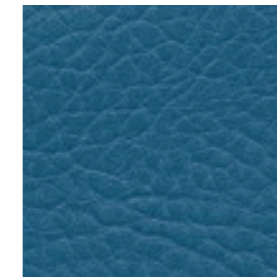
amethyst F6461664



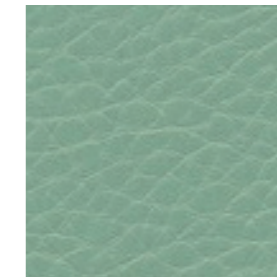
teal F6461766 New



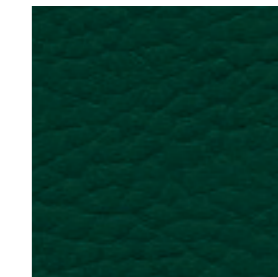
gletscher F6461708



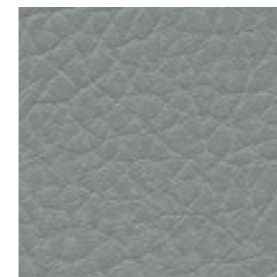
aqua F6461709



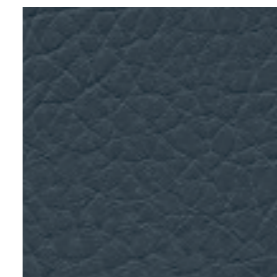
mint F6461767 New



rain forest F6461768 New



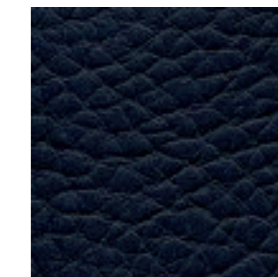
ashgrey F6461769 New



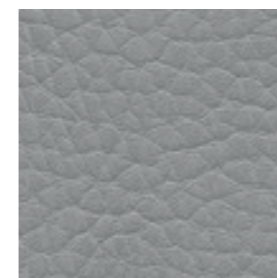
stone blue F6461770 New



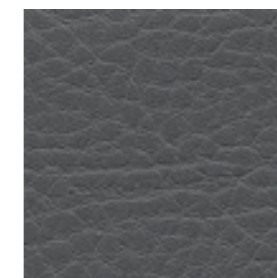
royal F6461710



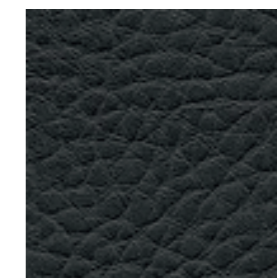
nightblue F6461729\*



silbergrau F6461730



schiefergrau F6461731



anthrazit F6461663



schwarz F6461659





## Materialzusammensetzung:

ca. 85 % PVC-Compound  
ca. 15 % BW-Gestrick  
**Gewicht:** 780 +/- 50 g/m<sup>2</sup>  
**Dicke:** 1,3 +/- 0,2 mm  
**Rollenbreite:** 137 cm  
**Rollenlänge:** 30 m

## Material composition:

approx. 85 % PVC-compound  
approx. 15 % CO-knitted fabric  
**weight:** 780 +/- 50 g/m<sup>2</sup>  
**thickness:** 1.3 +/- 0.2 mm  
**roll width:** 137 cm  
**roll length:** 30 m

## Composición del material:

aprox. 85 % compuesto de PVC  
aprox. 15 % soporte textil de punto de algodón  
**Peso:** 780 +/- 50 g/m<sup>2</sup>  
**Espesor:** 1,3 +/- 0,2 mm  
**Ancho de rollo:** 137 cm  
**Largo de rollo:** 30 m



langblebig  
long-lasting  
larga vida útil



reißfest  
tear resistant  
resistente al desgarro



abriebfest  
abrasion resistant  
resistencia a la abrasión  
**DIN EN ISO 5470-2:**  
**Parotega NF:**  
**> 75 000 Martindale**  
**Palma NF:**  
**> 50 000 Martindale**



schwer entflammbar  
flame protection  
resistencia al fuego  
**DIN 4102-1 (Part 1, B1),**  
**DIN EN 13501-1 B, s3, d0**  
**DIN 66084 P-a,**  
**NF M1, AM 18,**  
**B55852 IS-0+1+5,**  
**DIN EN 1021-1+2,**  
**DIN 4102-1 (B2),**  
**MVSS302, FAR 25.853,**  
**ÖNORM B3825 schwer**  
**brennbar (B1),**  
**ÖNORM A 3800-1 Q1,**  
**UNI 9175/87 (1.IM)**



pflegeleicht  
easy to clean  
fácil mantenimiento



lichtecht  
lightfast  
resistente a la luz  
**DIN EN ISO 105-B02,**  
**Stufe 7 / level 7 / nivel 7**



blut- und urinbeständig  
blood- and urine resistant  
resistente a la sangre  
y a la orina



**0161-19**  
**IMO FTPC Part 8**



desinfektionsmittelbeständig  
disinfectant resistant  
resistente a los  
desinfectantes

## Anwendung / Verarbeitung

Geeignet für viele Arten von Bepolsterungen und Bepannungen in der Polsterindustrie. Besonders geeignet für den Einsatz im trendorientierten Wohn- und Objektbereich, in öffentlichen Gebäuden und Einrichtungen. Problemlose Verarbeitung nach den üblichen Verfahren (Nähen, Heften, Kleben, Nageln). Keine eingefärbten Kleber oder Lösemittelkleber verwenden!

## Sonstige Hinweise

Für dauerhafte Freude an ihrem skai® Material bitte regelmäßig reinigen. Verschmutzungen durch Öle, Fette und Tinte müssen umgehend entfernt werden. Benutzen sie hierzu eine warme, milde Seifenlauge und ein Mikrofasertuch oder eine weiche Handbürste. Bitte keine scheuernden Reinigungsmittel, organische Lösungsmittel oder Zubereitungen verwenden. Bitte beachten sie, dass Anfärbungen durch Jeans oder andere Textilien von jeglicher Herstellergarantie ausgenommen sind.

## Besondere Hinweise

Unsere anwendungstechnischen Empfehlungen in Wort und Schrift, die wir aufgrund unserer Erfahrung entsprechend dem aktuellen Stand der Technik weitergeben, sind unverbindlich. Sie entbinden den Käufer nicht davon, die Eignung unsere Produkte für den vorgesehenen Verwendungszweck in eigener Verantwortung selbst zu prüfen. Dies gilt insbesondere für alle Komponenten, die zusammen mit unserem Produkt verarbeitet werden und deren Verträglichkeit im Verbund. Im Übrigen gelten unsere allgemeinen Geschäftsbedingungen. Hiermit verlieren alle früheren, anderslautenden Regelungen ihre Gültigkeit.

## Application / Processing

Suitable for many kinds of upholsteries and coverings in the upholstery industry. Especially suitable for the use in the modern residential and contract area, in public buildings and institutions. Problem-free processing in the usual procedures (sewing, tacking, sticking, nailing). Do not use colored adhesives or solvent adhesives!

## Other instructions

For durable joy with your skai® material, please clean regularly. Pollution by oil, fat and ink must be removed immediately. Clean with warm, mild soap lye and a micro-fibre cloth or a soft hand brush. Do not use abrasive detergents or organic solvents/preparations. Please note that colorings by jeans or other textiles are excluded from any manufacturer's guarantee.

## Special notes

Our spoken and written application engineering recommendations, which we pass on based on our experience and in accordance with the current state of the art, are non-binding. They do not absolve buyers of their own responsibility to check the suitability of our products for the intended purpose. This applies in particular to all components that are processed together with our product and their compatibility in combination with each other. Otherwise, our general terms and conditions are in effect. All earlier provisions to the contrary hereby become invalid.

## Aplicaciones / Manipulación

Apto para múltiples tipos de tapizado y revestimientos para la industria del mueble tapizado. Especialmente diseñado para el empleo en espacios modernos tanto públicos como privados, en edificios públicos e instituciones. Aplicación sencilla por medio de procedimientos habituales (cosido, hilvanado, pegado, clavado). No utilizar adhesivos tintados ni a base de disolventes!

## Otros consejos

Para disfrutar de su material skai® por muchos años, límpiolo regularmente. Las manchas de aceites, grasas y tintas deben eliminarse de inmediato. Utilice para ello una solución jabonosa suave y templada y un paño de microfibra, o bien un cepillo de mano de cerdas blandas. No utilizar productos de limpieza abrasivos, ni preparados o disolventes orgánicos. Recuerde que la garantía del fabricante excluye cualquier transferencia de color causada por tejanos y otros materiales textiles.

## Advertencias especiales

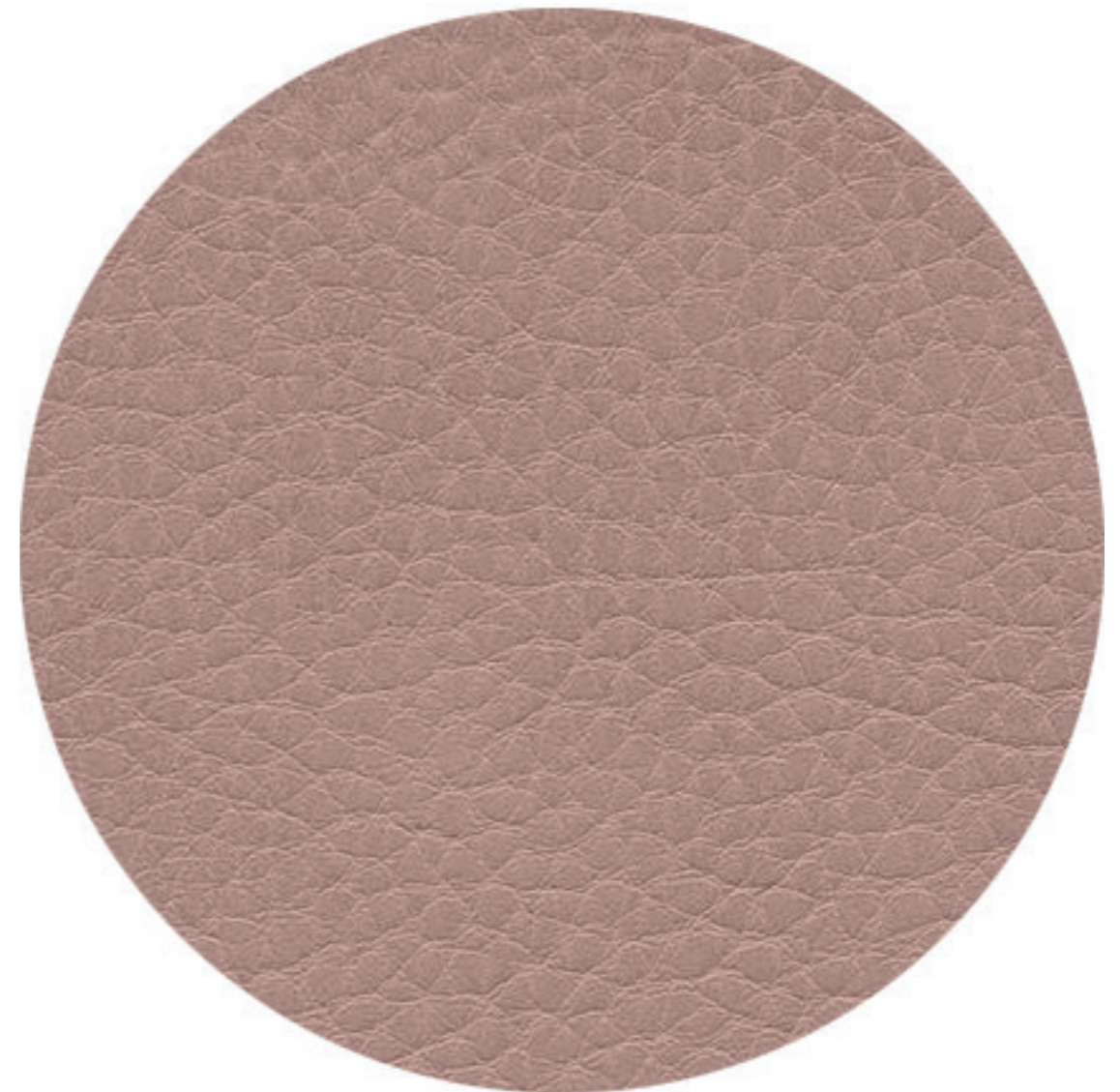
Las recomendaciones de aplicaciones técnicas que ofrecemos, ya sea de palabra o por escrito, en base a nuestra experiencia y conforme a los avances tecnológicos actuales, no son vinculantes. En ningún caso eximirán al comprador de comprobar por sí mismo y bajo su propia responsabilidad la idoneidad de nuestros productos para la finalidad de uso prevista. Esto se aplica especialmente para todos aquellos componentes que se utilicen junto con nuestro producto y su compatibilidad al combinarlos. En todo lo demás, se aplicarán nuestras condiciones generales, lo que supone la nulidad de cualquier otro acuerdo previo.



\*nach den gesetzlichen Bestimmungen  
prescribed by law  
de conformidad con las disposiciones legales



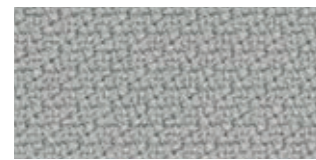
DIN EN ISO 9001  
DIN EN ISO 14001  
DIN EN ISO 50001



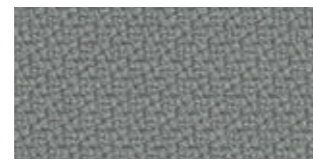


**SG-4-Step**

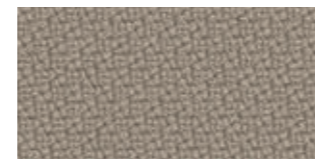
**[www.uebel-einrichtungen.de](http://www.uebel-einrichtungen.de)**



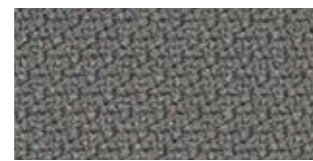
60004



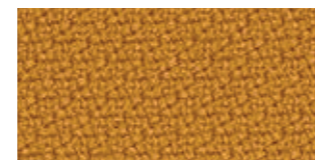
60091



61149



60011



62057



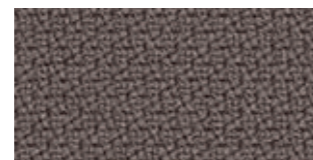
60092



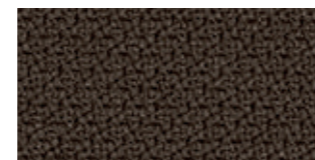
61103



66019



60090



61150



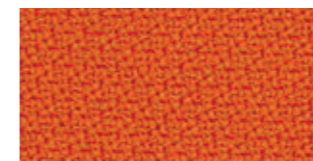
60999



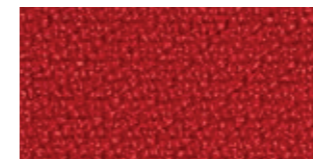
60089



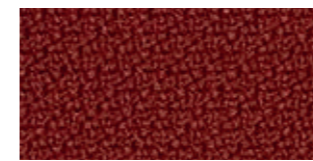
60021



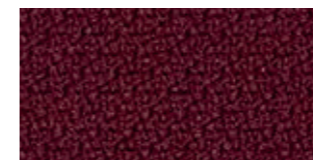
63082



63012



63075



64159



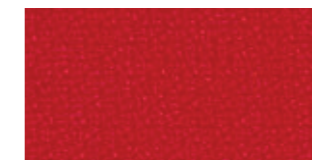
61102



64178



64180



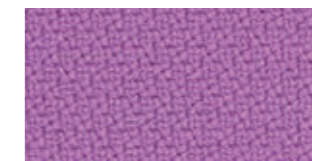
64179



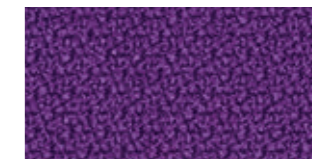
64177



64013



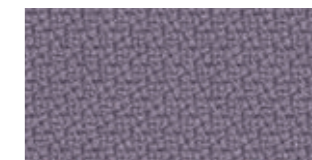
65092



65023



65047



65093



65094

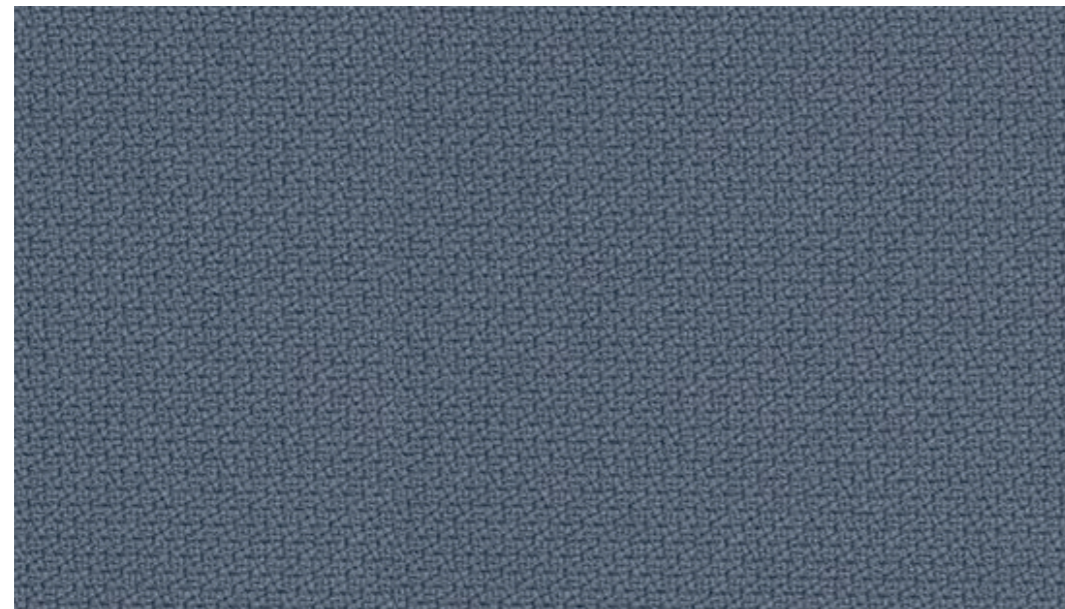


65095

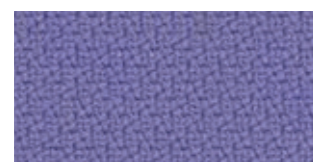


# SG-4-Step

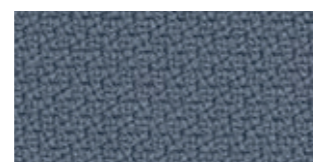
[www.uebel-einrichtungen.de](http://www.uebel-einrichtungen.de)



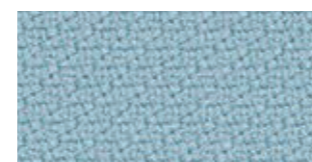
66152



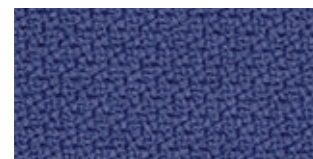
65090



66152



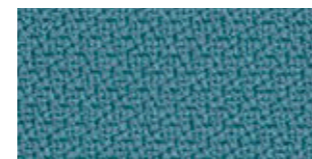
67004



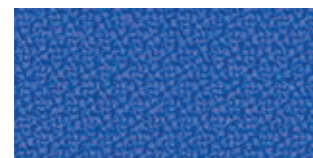
65091



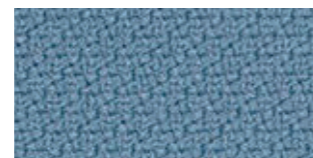
66148



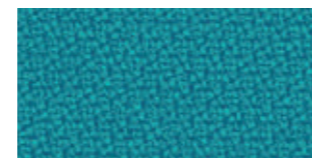
67072



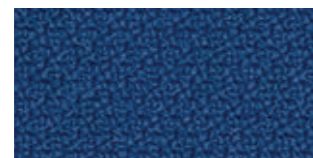
66150



66018



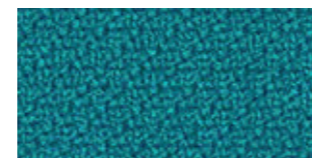
67073



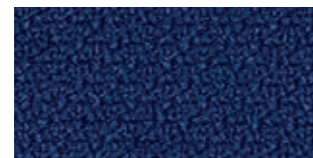
66149



66151



67007



65018



65011



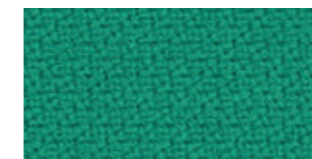
68158



68118



62073



68157



68163



68164



68159



68162



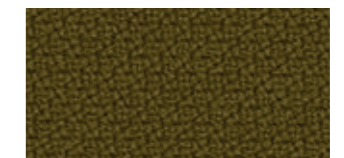
68119



68160



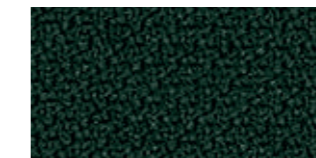
68120



68165



68161


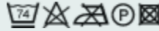


68121



# SG-4-Step

www.uebel-einrichtungen.de

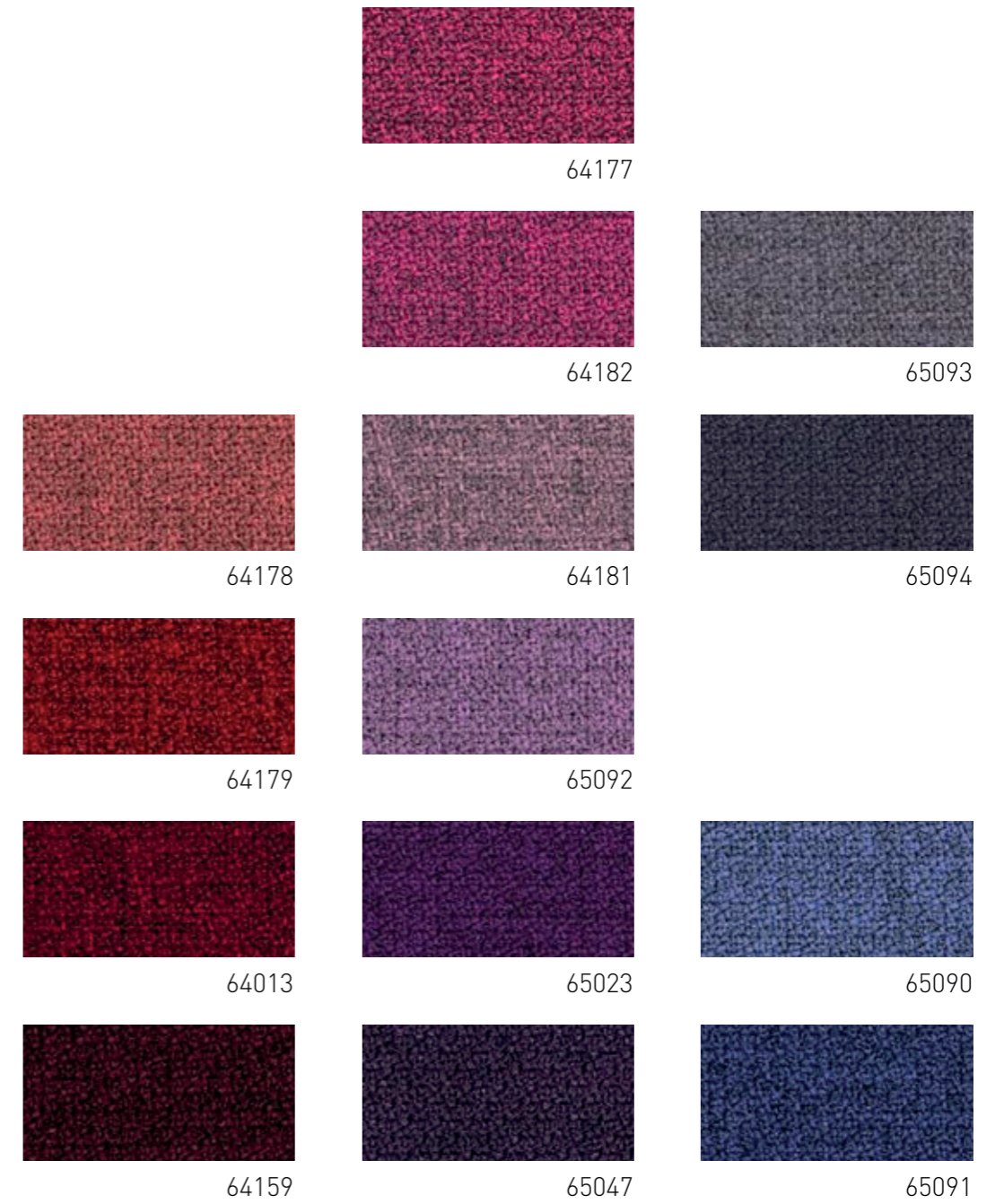
STEP SPECIFICATIONS		
<b>Design no.</b>	2440	
<b>Application</b>	contract	
<b>Composition</b>	100% Trevira cs	
<b>Weight</b>	g/lm oz/lin.yd	470 15.16
<b>Width</b>	cm inches	140 55
<b>Abrasion</b>	rubs martindale (EN ISO 12947-2) double rubs wyzenbeek (ASTM D4157-07) (heavy duty upholstery)	100,000 100,000
<b>Pilling</b>	scale 1-5, max. 5 - EN ISO 12945-2	4-5
<b>Light fastness</b>	scale 1-8, max. 8 - EN ISO 105-B02	5-7
<b>Rubbing fastness</b>	scale 1-5, max. 5 - EN ISO 105x12 (wet/dry)	4-5/4-5
<b>Maintenance</b>	<p>wash or dry cleaning P(W).</p> <p>Step is made of Trevira CS which is a polyester material suited for environments with special requirements for cleaning.</p> <p>can be wiped with Virkon S, Actichlor Plus, Prime Source ren-93 or Ethanol (70-85%).</p> <p>always follow the manufacturer's instructions and finish by wiping with a damp cloth.</p> <p>click here for guidance relating to <a href="#">disinfection</a>.</p> <p> 60°C shrinkage max. 3%.</p> <p> 74° shrinkage max. 5%.</p>	
<b>US ACT</b>	<ul style="list-style-type: none"> <li>• <a href="#">AATCC 16 Light fastness</a></li> <li>★ <a href="#">ASTM D3511 Pilling</a></li> <li>■ <a href="#">ASTM D4157-07 Wyz abrasion (heavy duty)</a></li> <li>♣ <a href="#">CA TB 117-2013</a></li> <li>● <a href="#">AATCC 8 or 116 Wet/dry crocking</a></li> </ul>	<p>pass</p> <p>pass</p> <p>pass</p> <p>pass</p> <p>pass</p>
<b>Acoustic test air flow resistance</b>	EN 29053 & ISO 9053-1 (airflow resistance)	
<b>Acoustic test sound absorption</b>	ISO 354 & ISO 11654 (sound absorption)	
<b>Flammability</b>	<p>IMO MSC 307(88) Annex 1 part 8 MED Certificate IMO DIN 4102 - B1 NFP 92-503/504/505 M1 BS EN 1021 1&amp;2 Cigarette and Match BS EN 1021-1 Cigarette BS 5852 Part 1 0.1 Cigarette &amp; match BS 5852 Crib 5 ÖNORM A3825-B1-B3800-Q1 UK FAR/JAR 25.853 (a).(i).(ii) BS 7176 Medium hazard AM 18 - NF D 60-013-(only for fabric) CA TB 117-2013 Class Uno UNI 9175 Class 1 I EMME DIN EN 13501-1 B-s1,d0</p> <p>Will also pass other flammability standards. Flame retardant performance is dependent upon the foam used.</p>	
<b>Certificates</b>	<a href="#">Expand list</a>	<a href="#">Complete list</a>
<b>Environment</b>	STANDARD 100 by OEKO-TEX® EU Ecolabel	
<b>Design</b>	Inger Mosholt Nielsen	
<b>Colours</b>	Cenk Kivrikoglu	





# SG-4-StepMelange

[www.uebel-einrichtungen.de](http://www.uebel-einrichtungen.de)





# SG-4-StepMelange

[www.uebel-einrichtungen.de](http://www.uebel-einrichtungen.de)



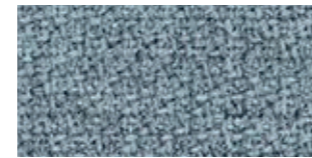
66152



66018



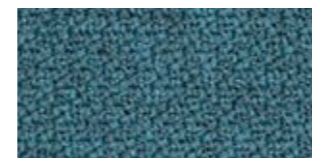
66152



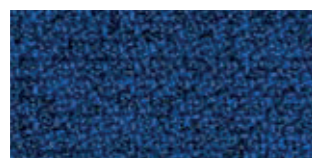
67004



66148



67072



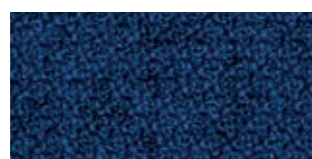
66150



66151



67007



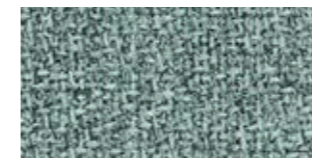
66149



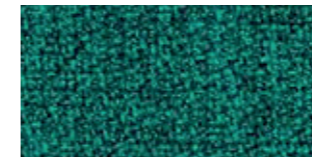
65018



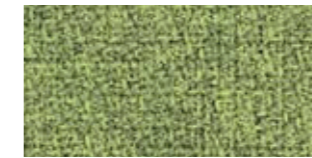
65011



68118



68157



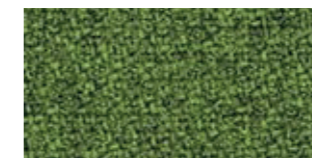
68163



62073



68159



68162



68119



68160



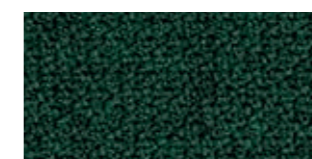
68120



68165



68158



68161



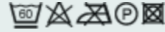

68121



# SG-4-StepMelange

www.uebel-einrichtungen.de

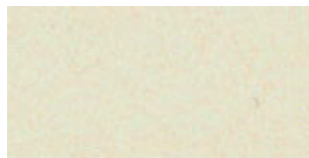
## STEP MELANGE SPECIFICATIONS

<b>Design no.</b>	2441/2442	
<b>Application</b>	contract	
<b>Composition</b>	100% Trevira cs	
<b>Weight</b>	g/lm oz/lin.yd	470 15.16
<b>Width</b>	cm inches	140 55
<b>Abrasion</b>	rubs martindale (EN ISO 12947-2) double rubs wyzenbeek (ASTM D4157-07) (heavy duty upholstery)	100,000 100,000
<b>Pilling</b>	scale 1-5, max. 5 - EN ISO 12945-2	4-5
<b>Light fastness</b>	scale 1-8, max. 8 - EN ISO 105-B02	5-7
<b>Rubbing fastness</b>	scale 1-5, max. 5 - EN ISO 105x12 (wet/dry)	4-5/4-5
<b>Maintenance</b>	<p>wash or dry cleaning P(W).</p> <p>Step Melange is made of Trevira CS which is a polyester material suited for environments with special requirements for cleaning.</p> <p>can be wiped with Virkon S, Actichlor Plus, Prime Source ren-93 or Ethanol (70-85%).</p> <p>always follow the manufacturer's instructions and finish by wiping with a damp cloth.</p> <p>click here for guidance relating to <a href="#">disinfection</a>.</p> <p> 60°C shrinkage max. 3%.</p> <p> 74° shrinkage max. 5%.</p>	
<b>US ACT</b>	<ul style="list-style-type: none"> <li>• <a href="#">AATCC 16 Light fastness</a> pass</li> <li>★ <a href="#">ASTM D3511 Pilling</a> pass</li> <li>■ <a href="#">ASTM D4157-07 Wyz abrasion (heavy duty)</a> pass</li> <li>♣ <a href="#">CA TB 117-2013</a> pass</li> <li>♣ <a href="#">AATCC 8 or 116 Wet/dry crocking</a> pass</li> </ul>	
<b>Flammability</b>	<p><a href="#">IMO MSC 307(88) Annex 1 part 8</a>  <a href="#">MED Certificate IMO</a>  <a href="#">DIN 4102 - B1</a>  <a href="#">NFP 92-503/504/505 M1</a>  <a href="#">BS EN 1021 1&amp;2 Cigarette and Match</a>  <a href="#">BS EN 1021-1 Cigarette</a>  <a href="#">BS 5852 Part 1 0.1 Cigarette &amp; match</a>  <a href="#">BS 5852 Crib 5</a>  <a href="#">ÖNORM A3825-B1-B3800-Q1 UK</a>  <a href="#">FAR/JAR 25.853 (a).(i).(ii)</a>  <a href="#">BS 7176 Medium hazard</a>  <a href="#">AM 18 - NF D 60-013-(only for fabric)</a>  <a href="#">CA TB 117-2013</a>  <a href="#">Class Uno UNI 9175 Class 1 I</a>  <a href="#">EMME</a>  <a href="#">DIN EN 13501-1 B-s1,d0</a>                      Will also pass other flammability standards. Flame retardant performance is dependent upon the foam used.</p>	
<b>Certificates</b>	<p><a href="#">Expand list</a> <a href="#">Complete list</a></p>	
<b>Environment</b>	STANDARD 100 by OEKO-TEX® EU Ecolabel	
<b>Design</b>	Inger Mosholt Nielsen	
<b>Colours</b>	Cenk Kivrikoglu	

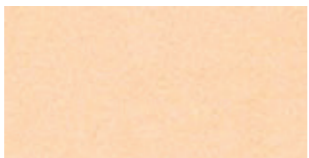




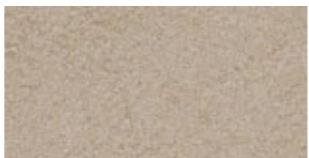
**SG-5-Comfort**



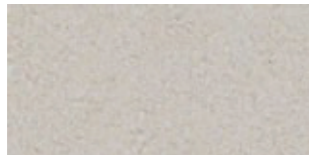
60005



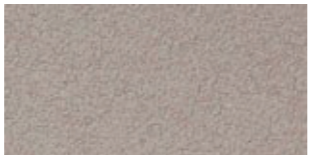
8384



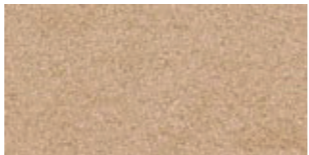
61002



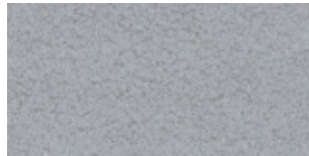
60002



61016



280



1161



61003



9084



60003



0004



0005



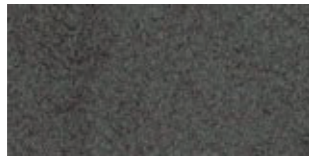
1012



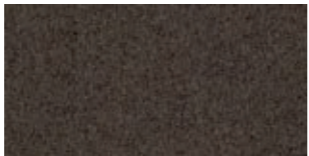
61014



0010



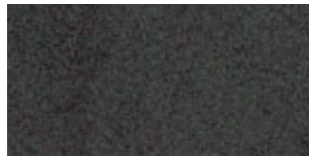
60008



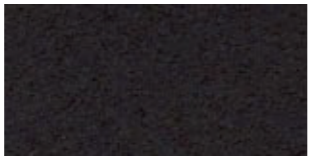
60004



61018



0049



61013



61015



0050



60009



1566

**www.uebel-einrichtungen.de**



63001



64012



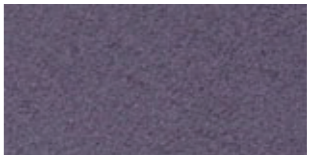
1043



63006



64014



65012



64002



64003



1147



0026



64013



65003



9055



1414



66005



0028



0029



64009



1153



1163



0040



64001



1065



1167



# SG-5-Comfort



1160



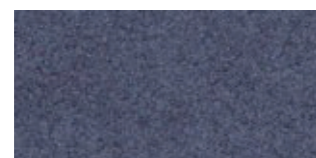
66002



67001



66010



8402



0035



67002



1160



66008



0033



9074



1124



0034



9075

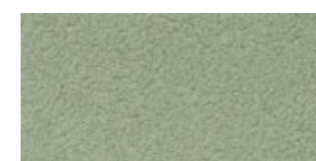


66004

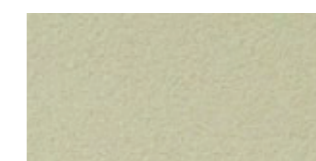


8422

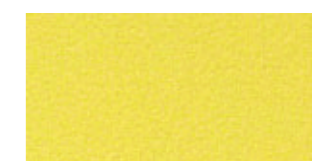
[www.uebel-einrichtungen.de](http://www.uebel-einrichtungen.de)



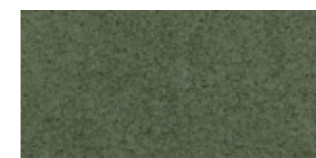
68009



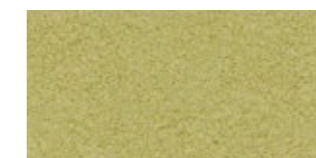
68008



62005



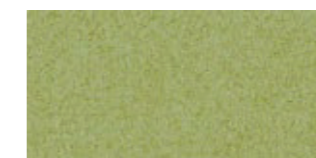
8397



1049



62003



68001



62004



68010



68011



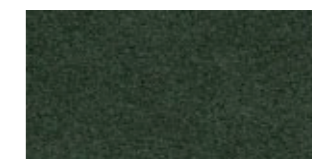
68007



68003



68000

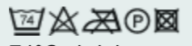
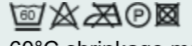



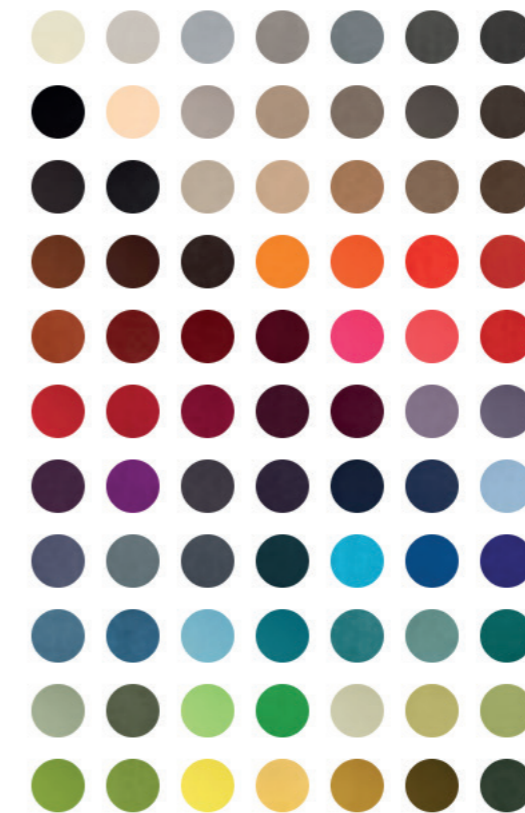
0018



# SG-5-Comfort

www.uebel-einrichtungen.de

COMFORT+ SPECIFICATIONS		
Design no.	8580	
Application	contract	
Composition	88% polyester/12% polyurethane incl. antistatic fibers and fire retardant fibers in the backside	
Weight	g/lm oz/lin.yd	385 12.42
Width	cm inches	140 55
Abrasion	rubs martindale (EN ISO 12947-2)	150,000
Pilling	scale 1-5, max. 5 - EN ISO 12945-2	5
Light fastness	scale 1-8, max. 8 - EN ISO 105-B02	5-7
Rubbing fastness	scale 1-5, max. 5 - EN ISO 105x12 (wet/dry)	4/4-5
Maintenance	<p>wash or dry cleaning P(W)</p> <p>most stains can be removed by brushing with a suede brush or using an eraser.</p> <p>or use a solution of luke-warm water and a neutral detergent.</p> <p><a href="#">click here for guidance relating to disinfection.</a></p> <p> 74°C shrinkage max. 2,5%.</p> <p> 60°C shrinkage max. 2%.</p>	
US ACT	 CA TB 117-2013	pass
Flammability	<p><a href="#">BS 5852 Part 1 0.1 Cigarette &amp; match</a></p> <p><a href="#">BS EN 1021 1&amp;2 Cigarette and Match</a></p> <p><a href="#">BS EN 1021-1 Cigarette</a></p> <p><a href="#">ÖNORM A3825-B2-B3800-Q1 UK</a></p> <p><a href="#">NF P 92-503 M3</a></p> <p><a href="#">CA TB 117-2013</a></p> <p>Will also pass other flammability standards. Flame retardant performance is dependent upon the foam used.</p>	
Certificates	<a href="#">Expand list</a>	<a href="#">Complete list</a>
Environment	STANDARD 100 by OEKO-TEX®	
Design	Gabriel Design Team	
Colours	Cenk Kivrikoglu	







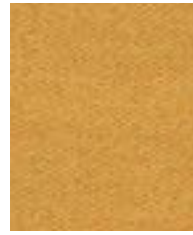
**Bracket**  
LDS23



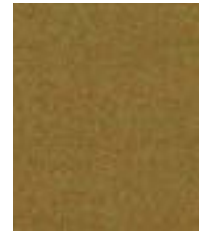
**Summon**  
LDS45



**Lateral**  
LDS28



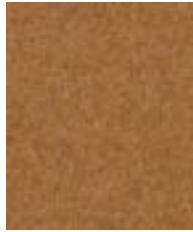
**Relate**  
LDS44



**Marry**  
LDS43



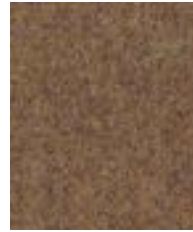
**Loop**  
LDS18



**Frame**  
LDS22



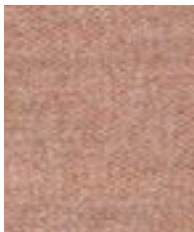
**Success**  
LDS76



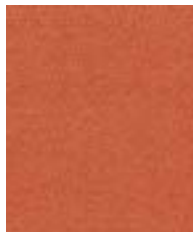
**Linea**  
LDS37



**Collective**  
LDS39



**Affinity**  
LDS74



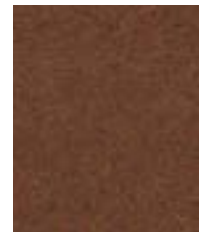
**Contribution**  
LDS75



**Work**  
LDS73



**Combo**  
LDS77



**Cordial**  
LDS78



**Congregate**  
LDS83



**Likeness**  
LDS82



**Similar**  
LDS81



**Mutual**  
LDS84



**Global**  
LDS86



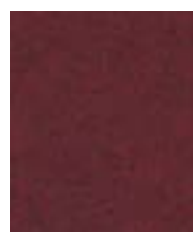
**Open**  
LDS71



**Apt**  
LDS80



**Share**  
LDS85



**Values**  
LDS87



**Amiable**  
LDS79



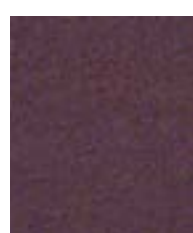
**Fate**  
LDS07



**Compose**  
LDS72



**Medley**  
LDS36



**Together**  
LDS70



**Process**  
LDS88





**Venture**  
LDS05



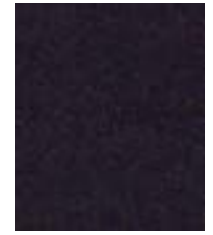
**Fellowship**  
LDS66



**Warmth**  
LDS67



**Collaborate**  
LDS68



**Assemble**  
LDS61



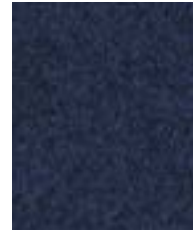
**Huddle**  
LDS65



**Order**  
LDS64



**Guild**  
LDS63



**Alike**  
LDS62



**Sync**  
LDS69



**Support**  
LDS55



**Kinship**  
LDS56



**Engage**  
LDS57



**Family**  
LDS58



**Unity**  
LDS38



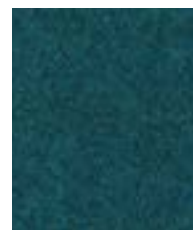
**Comply**  
LDS52



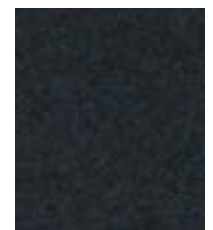
**Kindness**  
LDS51



**League**  
LDS50



**Group**  
LDS59



**Accord**  
LDS60



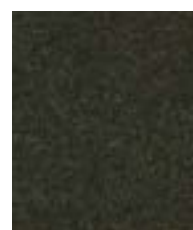
**Regard**  
LDS54



**Pact**  
LDS53



**Integrate**  
LDS47



**Couple**  
LDS41



**Bridge**  
LDS26



**Gather**  
LDS46



**Append**  
LDS49



**Interfuse**  
LDS48



**Intertwine**  
LDS42



**Co-operate**  
LDS40



Photographic fabric scans are not colour accurate. Always request actual fabric samples before ordering.



**Chain**  
LDS19



**Tag**  
LDS33



**Wed**  
LDS34



**Affix**  
LDS32



**Serendipity**  
LDS08



**Partner**  
LDS16



**Mix**  
LDS17



**Level**  
LDS20



**Pair**  
LDS31



**Chemistry**  
LDS35



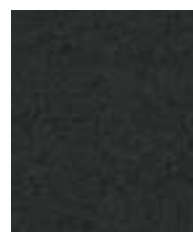
**Hook**  
LDS29



**Team**  
LDS21



**Bond**  
LDS24



**Compound**  
LDS25



**Seek**  
LDS27





Task seating



Soft seating



Cigarette & Match



Year guarantee



2+2 = 75. Where the total is more than the sum of the parts. Say hello to Synergy, a soft handle wool blend fabric, featuring exquisite fibre dyed shades and sumptuous piece dyed solids. It all comes together to provide our largest colour offering of 75 intelligent shades.

We have partnered with Just A Drop, the international water aid charity, and for every metre of fabric we sell, we will make a donation to a specific project around the world, helping to provide clean and safe water to those in need.



Technical information

UK

Industry Application Workplace, Education When FR treated: Hospitality & Leisure Composition 95% Virgin Wool, 5% Polyamide Environment Certified to the EU Ecolabel Certified to Indoor Advantage™ Gold Width 140 cm minimum Weight 400 g/m² ±5% (560 g/lin.m ±5%) Abrasion Resistance\* Heavy duty/10 year guarantee Independently certified to ≥100,000 Martindale cycles

Flammability EN 1021 - 1 (cigarette) EN 1021 - 2 (match) BS 7176 Low Hazard NF D 60-013 ÖNORM B 3825 & A 3800-1 (over CMHR 58kg/m³ Foam) UNI 9175 Classe 1 IM EN 13501-1 Adhered Class D, s1, d0 EN 13501-1 Un-adhered Class E, s2, d0 Optional: Please specify when ordering: BS 5852 Ignition Source 5 when FR treated BS 7176 Medium Hazard when FR treated EN 13501-1 Adhered Class B, s1, d0 when FR treated EN 13501-1 Un-adhered Class D, s2, d0 when FR treated BS 5867-2: Type B Curtains & Drapes when FR treated Note: Flammability performance is dependent on components used. Our certificates show what substrates have been used in our tests. For composite tests customers must ensure their complete furniture meets the necessary standards.

Light Fastness 5 (ISO 105 - B02)

Fastness to Rubbing Wet: 4, Dry: 4 (ISO 105 - X12)

Cleaning Vacuum regularly. Professionally dry clean or wipe clean with a damp cloth.

\*Abrasion testing produces a wide variability of results even from the same test sample. The independent certificate of ≥100,000 cycles is available on our website or from our customer service team. Internally we also specify this product at >100,000 cycles which we believe is realistic for repeatability of testing. Please be aware that abrasion testing alone is not a reliable indicator of the actual wear performance of fabrics. We're so confident in the durability of our products that we provide a robust 10 year guarantee (full details available). Please note that seam performance is dependent on seam construction and needle and thread type. We recommend that appropriate sewing advice be taken. Batch to batch variations in shade may occur within commercial tolerances. We reserve the right to alter technical specifications without notice. The Unregistered Design Rights and the Copyright in all designs are the exclusive property of Camira Fabrics Limited.

D

Einsatzbereich Büro, Bildung Wenn mit FR ausgerüstet: Hotellerie & Gastronomie Zusammensetzung 95% Schurwolle, 5% Polyamid Umweltfreundlich Nach Zertifikat EU Ecolabel Nach Zertifikat Indoor Advantage™ Gold Breite 140 cm nutzbare Breite Gewicht 400 g/m² ±5% (560 g/lfd.m ±5%) Scheuerfestigkeit\* Schwere Objektensatz/10 Jahre Garantie Extern zertifiziert mit ≥100,000 Scheuertouren Martindale

Feuersicherung EN 1021 - 1 (Zigarettentest) EN 1021 - 2 (Streichholzttest) BS 7176 Low Hazard NF D 60-013 ÖNORM B 3825 & A 3800-1 (mit CMHR 58kg/m³ Schaum) UNI 9175 Classe 1 IM EN 13501-1 Adhered Class D, s1, d0 EN 13501-1 Un-adhered Class E, s2, d0 Bitte bei Auftragserteilung angeben: BS 5852 Ignition Source 5 wenn mit FR ausgerüstet BS 7176 Medium Hazard wenn mit FR ausgerüstet EN 13501-1 Adhered Class B, s1, d0 wenn mit FR ausgerüstet EN 13501-1 Un-adhered Class D, s2, d0 wenn mit FR ausgerüstet BS 5867-2: Type B Curtains & Drapes wenn mit FR ausgerüstet Bemerkung: Die Schwerentflammbarkeit hängt von den verwendeten Komponenten ab. Unsere Zertifikate zeigen auf, welche Substrate bei den Tests verwendet wurden. Bei Verbundtests muss sichergestellt sein, daß das komplette Möbel den entsprechenden Standards entspricht.

Lichtechtheit 5 (ISO 105 - B02)

Reibechtheit Nass: 4, Trocken: 4 (ISO 105 - X12)

Reinigung Regelmässig absaugen. Professionelle Trockenreinigung. Alternativ dazu mit einem feuchten Tuch abwischen.

\*Die Scheuerfestigkeitsprüfung ergibt selbst bei gleichen Testmustern stark abweichende Ergebnisse. Das Zertifikat eines unabhängigen Prüfnstitutes über ≥100,000 Scheuertouren erhalten Sie von unserem Vertriebsinnendienst oder auf unserer Webseite. Intern spezifizieren wir auch dieses Produkt mit >100,000 Scheuertouren, die in der Serienfertigung als realistisch angenommen werden. Bitte nehmen Sie zur Kenntnis, dass die Scheuerfestigkeitsprüfung allein keine Aussagekraft über die Langlebigkeit eines Bezugsstoffes hat. Wir sind von der Langlebigkeit unserer Produkte überzeugt und bieten daher 10 Jahre Garantie (Details auf Anfrage). Eine optimale Nahtausreissfestigkeit hängt von der Nahtfahne, der verwendeten Nadel und dem Näh-Garn ab. Wir empfehlen daher Nähversuche durchzuführen. Handelsübliche Farbabweichungen können auftreten und berechtigen nicht zur Reklamation. Wir behalten uns die Änderung technischer Spezifikationen vor. Die registrierten und nicht registrierten Urheberrechte der Dessinierungen sind ausschliessliches Eigentum der Camira Fabrics Limited.

F

Application industrielle Lieu de travail, Education Si traitement FR: Hôtellerie et loisirs Composition 95% Laine Vierge, 5% Polyamid Écologique Avec le certificat EU Ecolabel Certifié à Indoor Advantage™ Gold Largeur 140 cm minimum Poids 400 g/m² ±5% (560 g/m.l ±5%) Résistance à l'abrasion\* Usage intense/Garantie 10 ans Certificat indépendant ≥100,000 cycles Martindale

Flammabilité EN 1021 - 1 (cigarette) EN 1021 - 2 (allumette) BS 7176 Low Hazard NF D 60-013 ÖNORM B 3825 & A 3800-1 (avec CMHR 58kg/m³ Mousse) UNI 9175 Classe 1 IM EN 13501-1 Adhered Class D, s1, d0 EN 13501-1 Un-adhered Class E, s2, d0 Prière de le mentionner lors de la commande: BS 5852 Ignition Source 5 si traitement FR BS 7176 Medium Hazard si traitement FR EN 13501-1 Adhered Class B, s1, d0 si traitement FR EN 13501-1 Un-adhered Class D, s2, d0 si traitement FR BS 5867-2: Type B Curtains & Drapes si traitement FR Note: La performance de flammabilité dépend des composantes utilisées. Nos certificats indiquent les substrats utilisés dans nos tests. Pour les tests composites, les clients doivent s'assurer que leurs meubles complets satisfont aux normes nécessaires.

Solidité à la lumière 5 (ISO 105 - B02)

Solidité au Frottement Mouillé: 4, Sec: 4 (ISO 105 - X12)

Nettoyage Aspirer régulièrement. Nettoyage à sec professionnel. Autrement, essuyer avec un tissu humide.

\*Les tests de résistance à l'abrasion proposent une large variété de résultat final, parfois sur le même échantillon de tissu. Le certificat indépendant de ≥100,000 cycles est disponible sur notre site internet; vous pouvez également contacter notre Service Clients. Nous validons également – en interne – à >100,000 cycles; ce qui est, d'après nous, plus réaliste dans le but d'obtenir une continuité égale des résultats de tests. Merci de noter que l'abrasion seule ne constitue pas un indicateur de confiance dans la performance du tissu à long terme. Nous avons une confiance absolue en nos produits et leur durabilité, c'est pour cela que nous vous offrons une garantie robuste de 10 ans. Veuillez noter que la performance du joint dépend de sa construction ainsi que de l'aiguille et du type de fil utilisés. Une variation de couleurs peut provenir (commercialement tolérable). Nous réservons le droit de changer les spécifications techniques sans préavis. Les Droits de Conception non-enregistrés et les droits d'auteur de tous les motifs sont la propriété exclusive de Camira Fabrics Limited.

ES

Aplicación Industrial Puesto de Trabajo, Educación Estando con tratamiento: Sector Hotelero & Placer Composición 95% Lana Virgen, 5% Polyamid Ambiental Certificado con EU Ecolabel Certificado de Indoor Advantage™ Gold Ancho 140 cm mínimo Peso 400 g/m² ±5% (560 g/lin.m ±5%) Resistencia a la abrasión\* Garantía de 10 años con uso intenso independiente del certificado de ≥100,000 Ciclos Martindale

Inflamabilidad EN 1021 - 1 (cigarillo) EN 1021 - 2 (cerilla) BS 7176 Low Hazard NF D 60-013 ÖNORM B 3825 & A 3800-1 (sobre 58kg/m³ Foam CMHR) UNI 9175 Classe 1 IM EN 13501-1 Adhered Class D, s1, d0 EN 13501-1 Un-adhered Class E, s2, d0 Por favor especificar cuando se requiere en el pedido: BS 5852 Ignition Source 5 estando con tratamiento FR BS 7176 Medium Hazard estando con tratamiento FR EN 13501-1 Adhered Class B, s1, d0 estando con tratamiento FR EN 13501-1 Un-adhered Class D, s2, d0 estando con tratamiento FR BS 5867-2: Type B Curtains & Drapes estando con tratamiento FR Nota: El rendimiento de la inflamabilidad depende de los componentes usados. Nuestros certificados muestran qué substratos se han usado en nuestros tests. Para tests compuestos nuestros clientes deben asegurar si sus muebles cumplen la normativa al uso.

Solidez a la luz 5 (ISO 105 - B02)

Solidez al rozamiento Húmedo: 4, Seco: 4 (ISO 105 - X12)

Limpieza Limpiar con aspirador con regularidad. Limpiar en seco, o bien lavar con un paño húmedo.

\*Los Test de Abrasión producen unos resultados muy variables incluso con la misma muestra. El certificado de ≥100,000 ciclos Martindale está disponible en nuestra web o se puede pedir al Departamento Comercial. Internamente también certificamos este producto >100,000 ciclos, que pensamos que es lo más realista posible en este caso, con una repetición de resultados tan dispares. Tengan en cuenta que el Test de Abrasión solo no es un indicador fiable sobre el desgaste de un tejido. De hecho, estamos tan convencidos en la durabilidad de nuestros tejidos, que ofrecemos una garantía de 10 años (detalles completos disponibles). Tenga en cuenta que el rendimiento de la costura depende de la construcción de la costura, además de la aguja y del tipo de rosca. Le recomendamos que se aconsejen para coser la costura. Las variaciones de lote a lote en la sombra se puede producir dentro de tolerancias comerciales. Nos reservamos el derecho a efectuar modificaciones técnicas sin previo aviso. Los derechos sobre los diseños no registrados y los derechos de autor en todos los diseños son propiedad exclusiva de Camira Fabrics Limited.





### Spezifikationen

Design	Material	Dicke	Breite	Knickungen	Feuersicherung	Lichtechtheit	Reibechtheit	Pilling	Preisgruppe
						Skala 1-5 5 = beste Note	Skala 1-5 5 = beste Note	Skala 1-5 5 = beste Note	
<b>ECHTLEDER</b>	100% Leder Sommerlin	0,9-1,1 mm		< 50.000	DIN EN 1021 1+2		4/ trocken 4/ mass		5