

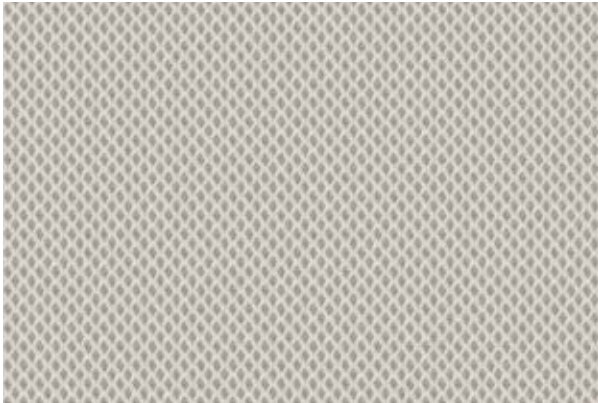
BEZUGSMATERIALIEN

Q233

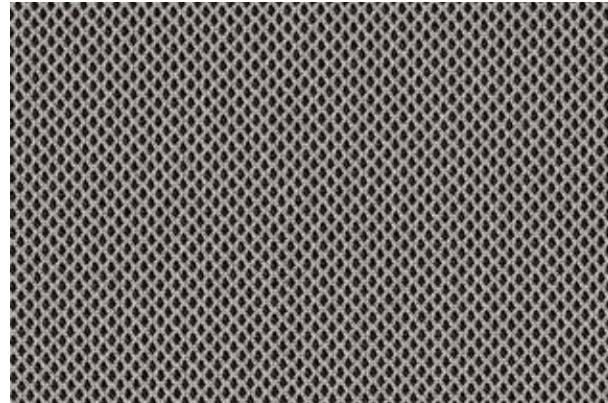
Die in dieser Karte abgebildeten Muster sind den Originalen nachempfunden. Etwaige Farbabweichungen sind drucktechnisch bedingt, können kein Reklamationsgrund sein und schließen einen Umtausch aus.

*Die Schwerentflammbarkeit hängt vom verwendeten Polsteraufbau ab. Informationen über den verwendeten Polsteraufbau sind in der Regel über die Prüfberichte des Herstellers erhältlich.

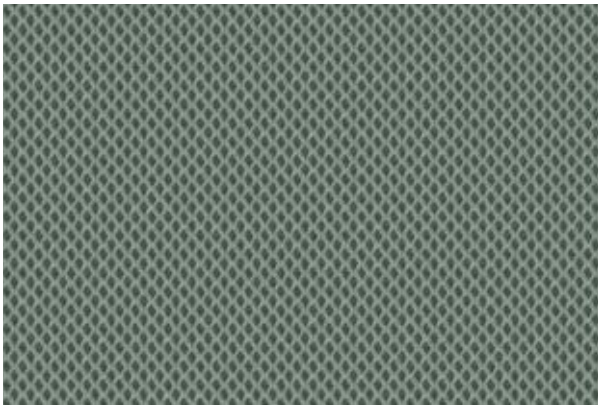
Membrane Rückenlehne/Backrest



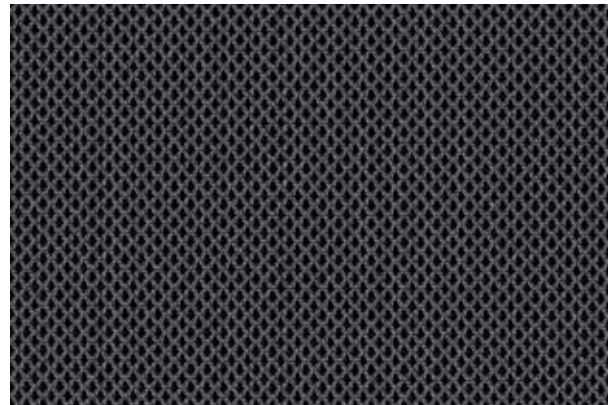
M6A



M66



M6B



M61



M62

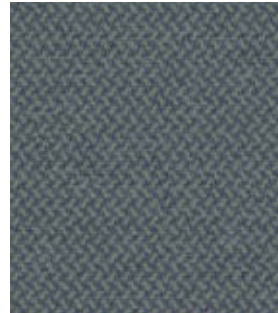
Material: 77% Polyester, 23% recyceltes Polyester
Gewicht: 510 g/lfm
Scheuertouren (EN ISO 12947-2, Martindale): 100.000
Pilling/Knötchenbildung (EN ISO 12945-2): 5
Reibechtheit nass/trocken (EN ISO 105-X12): 4-5/4-5
Lichteichtheit (EN ISO 105-B02): 5-7
Erfüllt folgende **Brandschutznorm***: BS 5852 0&1; CAL 117-2013;
EN 1021, part 1 & 2 (BS5852 crib 5); UK FFSR; UNI Class 1.IM
Umweltzertifikate: Oekotex Standard 100



CSE46



CSE43



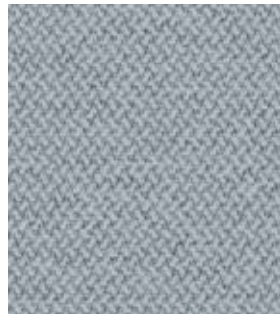
CSE44



CSE14



CSE40



CSE39



CSE45



CSE13



CSE03



CSE34



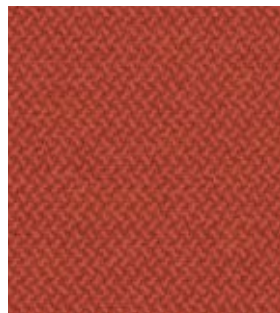
CSE02



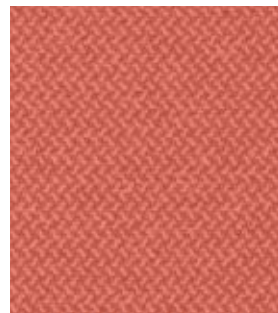
CSE21



CSE25



CSE29



CSE26



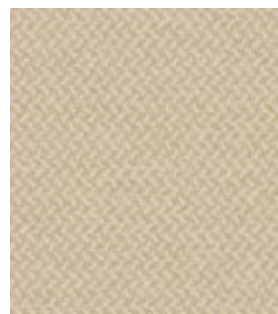
CSE28



CSE33



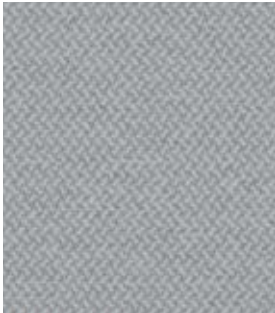
CSE36



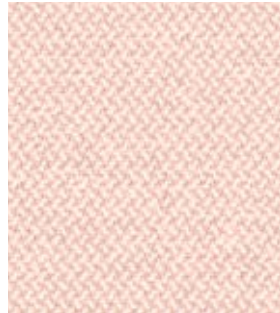
CSE01



CSE31



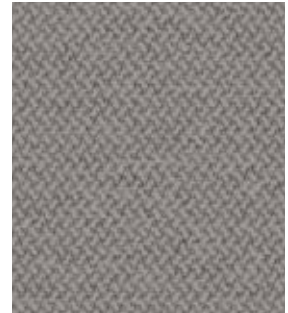
CSE41



CSE19



CSE23



CSE11



CSE38



CSE20



CSE42

Material: 100 % Polyester; **Gewicht:** 448 g/lfm, **Breite:** 140 cm,
Scheuertouren (EN ISO 12947-2, Martindale): ≥ 100.000 , **Pilling**/Knötchenbildung (EN ISO 12945-2): 4-5,
Reibechtheit nass/trocken (EN ISO 105-X12): 4/4, **Lichteichtheit** (EN ISO 105-B02): 5,
Erfüllt folgende **Brandschutznormen***: EN 1021, part 1 & 2; BS 7176 Low Hazard;
EN 13501-1 Adhered Class B, s1, d0; EN 13501-1 Un-adhered Class C, s1, d0

Nova [9]



91P



91F



91I



91L



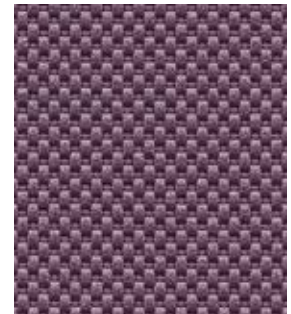
91S



91Q



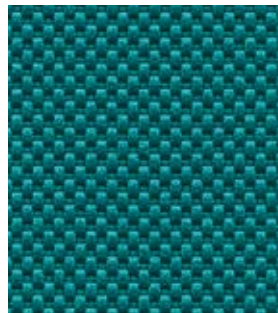
91T



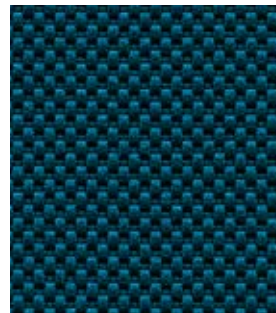
91E



91U



91A



91D



91J



91W

Material: 100 % Polyester

Gewicht: 560 g/lfm

Breite: 140 cm

Scheuertouren (EN ISO 12947-2, Martindale): 50.000

Pilling/Knötchenbildung (EN ISO 12945-2): 5

Reibechtheit nass/trocken (EN ISO 105-X12): 4/5

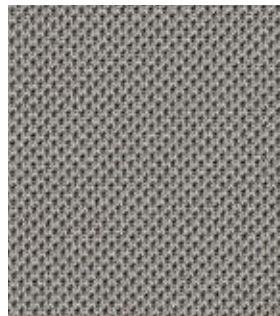
Lichtechtheit (EN ISO 105-B02): 5-7

Erfüllt folgende **Brandschutznormen***: EN 1021, part 1 & 2

Atlantic (9)



9AT_A60063



9AT_A60011



9AT_A60025



9AT_A60999



9AT_A60141



9AT_A66063



9AT_A66057



9AT_A66041



9AT_A64117



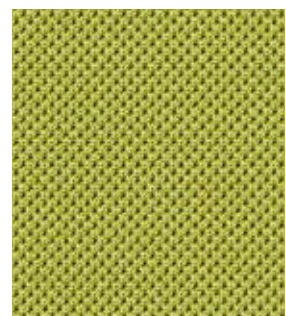
9AT_A64089



9AT_A63057



9AT_A64092



9AT_A68054

Material: 100 % Polyester

Gewicht: 530 g/lfm

Breite: 150 cm

Scheuertouren (EN ISO 12947-2, Martindale): 110.000

Pilling/Knötchenbildung (EN ISO 12945-2): 4-5

Reibechtheit nass/trocken (EN ISO 105-X12): 4-5/4-5

Lichtechtheit (EN ISO 105-B02): 5-7

Erfüllt folgende **Brandschutznormen***: 4102: B1; EN 1021, part 1 & 2;

Calif.Tech.Bull.117,E; ÖNORM B 3825-B1-3800-Q1 UK; Class Uno UNI 9175 Class 1 I EMME

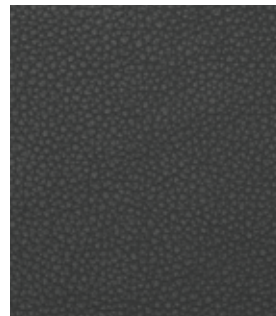
Leder (0)



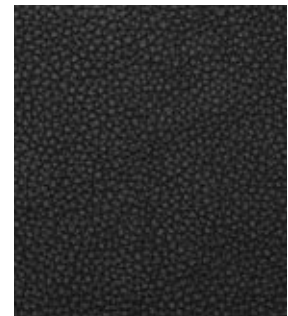
PL102



PL103



PL104



PL101



PL105



PL106



PL107



PL108



PL109



PL110



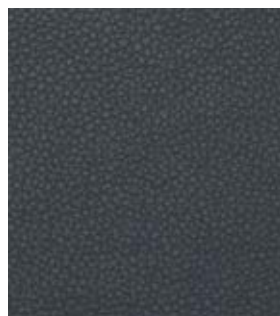
PL111



PL112



PL113



PL114

Leder ist ein Naturprodukt. Natürliche Merkmale wie Insektenstiche, kleine Verwachsungen und Farbschattierungen geben dem Material seine unverwechselbare Note. Sie beweisen die Echtheit und Einmaligkeit und können daher nicht Grund einer Reklamation sein.

Stärke: ca. 1,2 mm

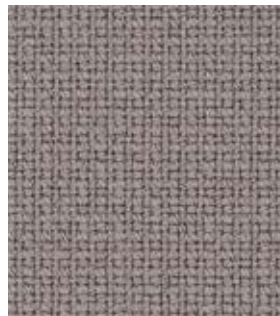
Reibechtheit (EN ISO 11640): 500 Touren trocken ≥ 4 ; 250 Touren nass $\geq 3-4$;
80 Touren Schweiß pH9 $\geq 3-4$

Lichtehtheit (EN ISO 105-B02): ≥ 5

Erfüllt folgende **Brandschutznormen***: EN 1021, part 1 & 2



4FA_F60005



4FA_F60078



4FA_F60003



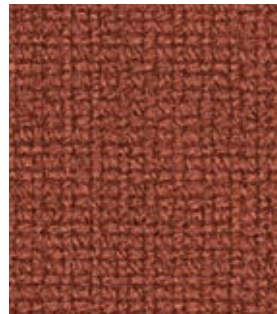
4FA_F60999



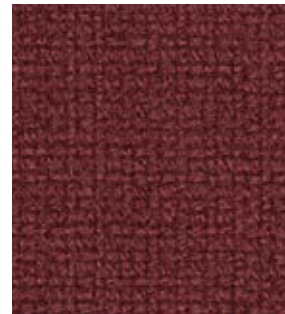
4FA_F64169



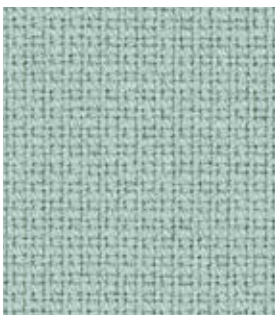
4FA_F64089



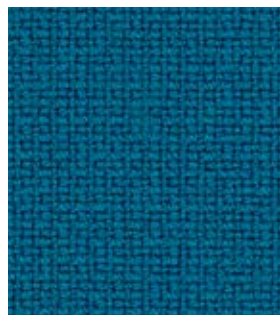
4FA_F63076



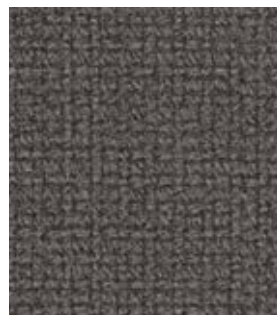
4FA_F64167



4FA_F67068



4FA_F67004



4FA_F61133



4FA_F60051



4FA_F66130



4FA_F60017



4FA_F66005

Material: 95 % Wolle, 5 % Polyamid

Gewicht: 630 g/lfm; **Breite:** 140 cm

Scheuertouren (EN ISO 12947-2, Martindale): 200.000

Pilling/Knötchenbildung (EN ISO 12945-2): 4

Reibechtheit nass/trocken (EN ISO 105-X12): 4-5/4-5

Lichtechtheit (EN ISO 105-B02): 5-7

Erfüllt folgende **Brandschutznormen***: EN 1021, part 1 & 2;

BS 5852: 1990; Section 4, Ignition Sources 5; CA TB 117-2013; BS 476 Part 7, class 1;

Class Uno UNI 9175 Class 1 | EMME; ÖNORM A3800-B1-B3825-Q1 UK

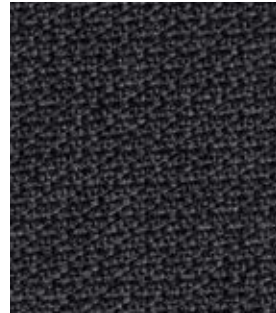
Step / Step Melange (4)



4ST_2440_60004



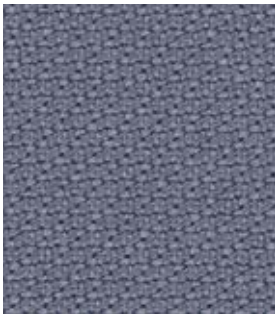
4ST_2441_60004



4ST_2442_60021



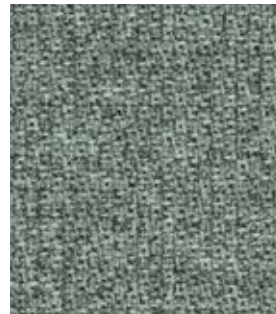
4ST_2440_60999



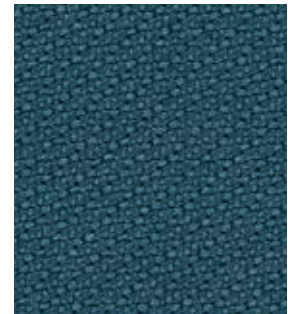
4ST_2440_66152



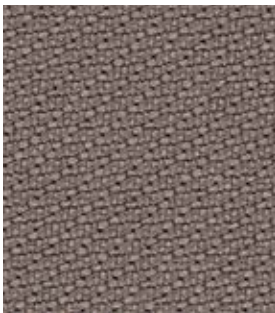
4ST_2442_66152



4ST_2441_68118



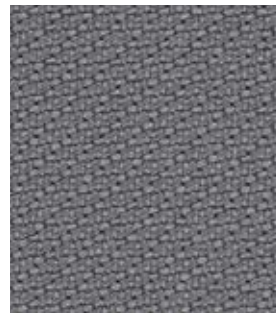
4ST_2440_68158



4ST_2440_60090



4ST_2442_60090



4ST_2440_60092



4ST_2442_60092



4ST_2440_62057

Material: 100 % Polyester (Trevira CS)

Gewicht: 470 g/lfm; **Breite:** 140 cm

Scheuertouren (EN ISO 12947-2, Martindale): 100.000

Pilling/Knötchenbildung (EN ISO 12945-2): 4-5

Reibechtheit nass/trocken (EN ISO 105-X12): 4-5/4-5

Lichtechtheit (EN ISO 105-B02): 5-7

Erfüllt folgende **Brandschutznormen***: 4102: B1; NFP 92-503/504/505 M1;

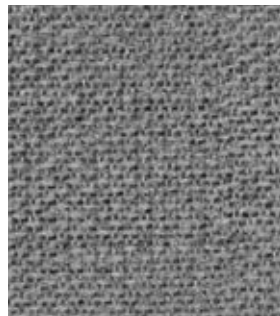
EN 1021, part 1 & 2; BS 5852: 1990; section 4, crib 5; UNI 9175-CSE RF4/83: Class I;

Calif.Tech. Bull.117,E; ÖNORM B3825: Q1

Connect (4)



CO61207



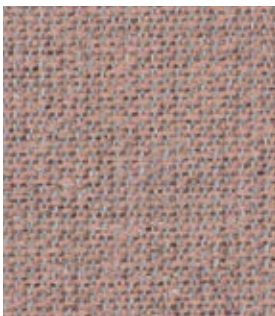
CO60146



CO60999



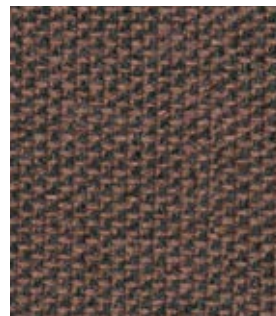
CO61210



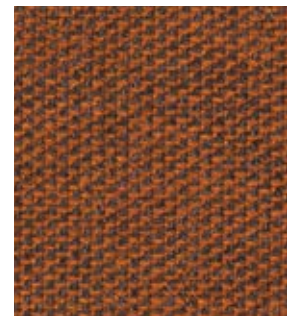
CO64229



CO64230



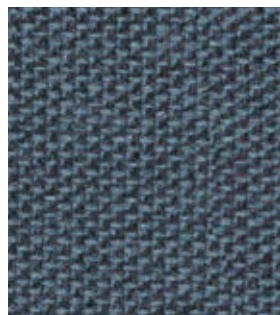
CO65122



CO63107



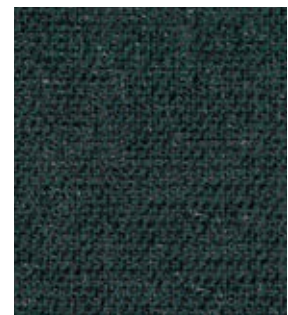
CO66203



CO66205



CO65127



CO67115



CO67113

Material: 48% Wolle, 52% Polyester

Gewicht: 370 g/lfm

Breite: 140 cm

Scheuertouren (EN ISO 12947-2, Martindale): 90.000

Pilling/Knötchenbildung (EN ISO 12945-2): 4-5

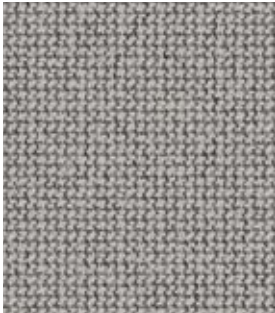
Reibechtheit nass/trocken (EN ISO 105-X12): 4-5/4-5

Lichtechtheit (EN ISO 105-B02): 5-7

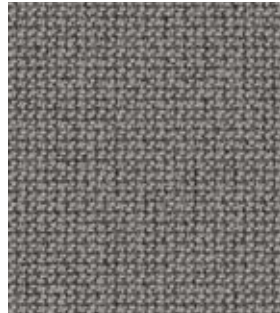
Erfüllt folgende **Brandschutznormen***: EN 1021, part 1 & 2;

BS 5852 Part 1 0,1; BS 5852 Crib 5; CA TB 117-2013

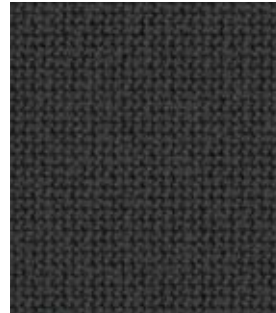
Cura (4)



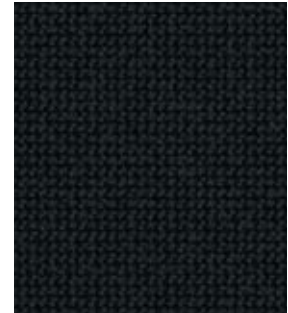
CU60112



CU60110



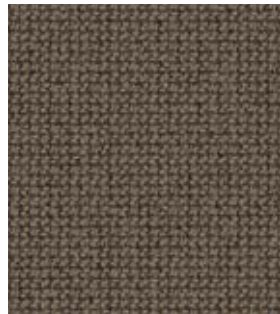
CU60019



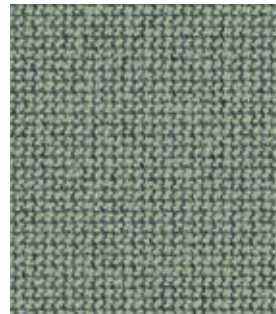
CU60111



CU61168



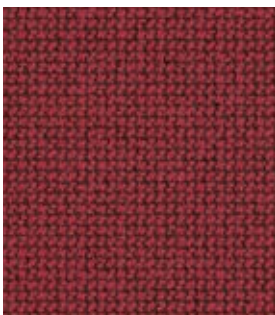
CU61169



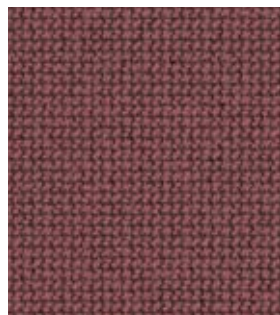
CU68186



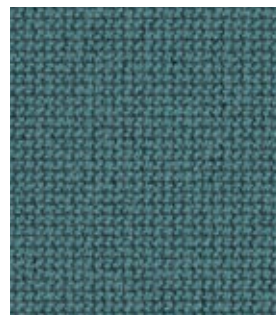
CU68182



CU64196



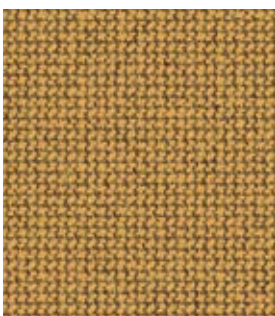
CU64195



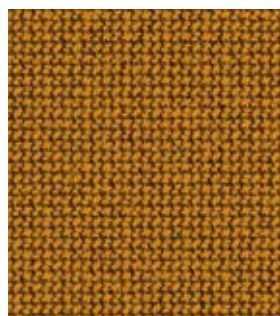
CU68187



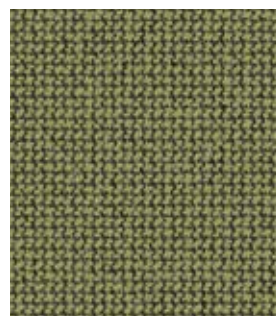
CU66169



CU62083



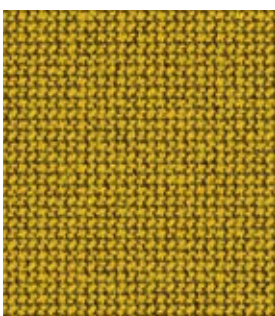
CU62082



CU68181



CU66166



CU62084

Material: 100 % Polyester

Gewicht: 420 g/lfm

Breite: 140 cm

Scheuertouren (EN ISO 12947-2, Martindale): 100.000

Pilling/Knötchenbildung (EN ISO 12945-2): 4-5

Reibechtheit nass/trocken (EN ISO 105-X12): 4-5/4-5

Lichtechtheit (EN ISO 105-B02): 5-8

Erfüllt folgende **Brandschutznormen***: EN 1021, part 1 & 2;
BS 5852 Part 1 0,1; CA TB 117-2013

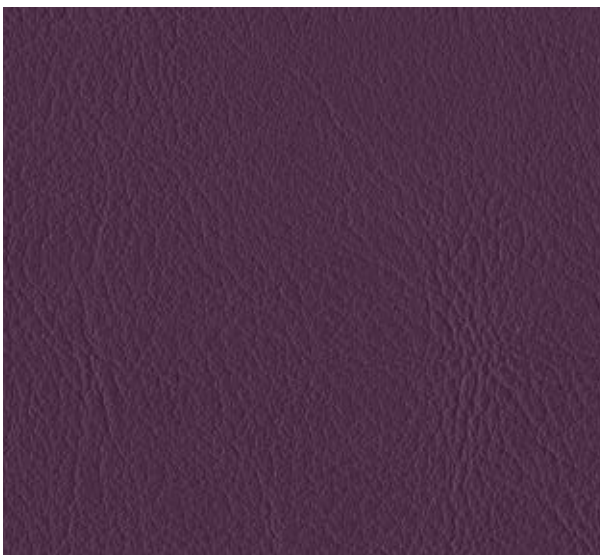
Lederimitat (4)



4KP



4KO



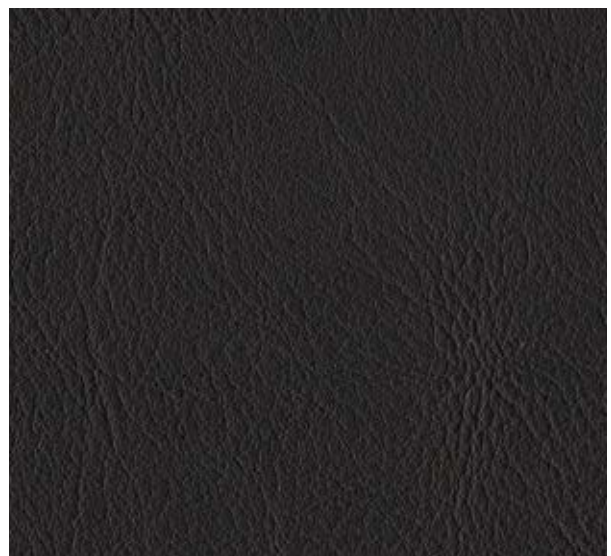
4KQ



4KN



4KM



4KL

Material:

84 % Deckschicht (80 % natürliche und nachwachsende, 20 % erdölbasierte Rohstoffe)

16 % Trägermaterial: Bio-Baumwolle

Gewicht: 1.015 g/lfm

Breite: 137 cm

Reibechtheit nass/trocken (EN ISO 105-X12): 4-5/4-5

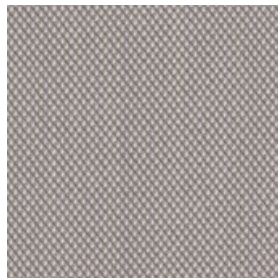
Lichtechtheit (EN ISO 105-B02): 5

Erfüllt folgende **Brandschutznormen***: EN 1021, part 1 & 2

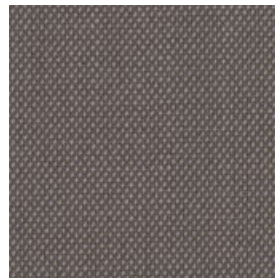
Steelcut Trio 3 (1)



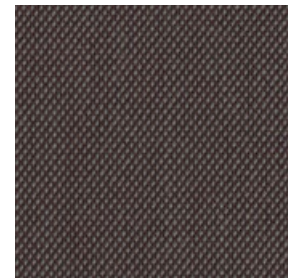
SE105



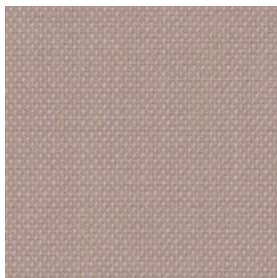
SE205



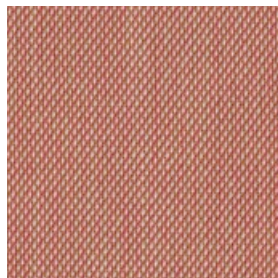
SE246



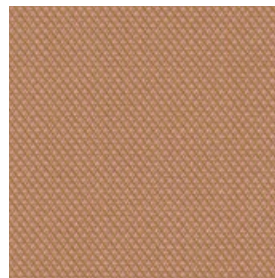
SE276



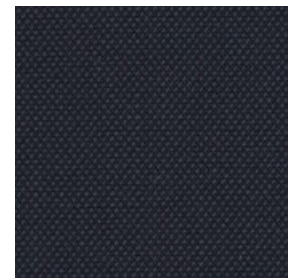
SE226



SE515



SE506



SE796



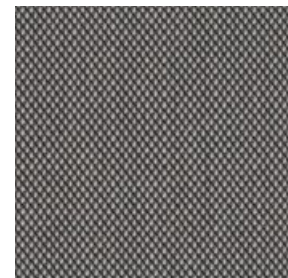
SE806



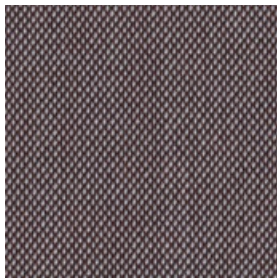
SE716



SE746



SE133



SE336

*Um diesen Test zu bestehen, ist eine flammhemmende Behandlung erforderlich.

Material: 90 % Schurwolle, 10 % Nylon

Gewicht: 770 g/lfm; **Breite:** 140 cm

Scheuertouren (EN ISO 12947-2, Martindale): 100.000

Pilling/Knötchenbildung (EN ISO 12945-2): 4

Reibechtheit nass/trocken (EN ISO 105-X12): 4-5/4-5

Lichtechtheit (EN ISO 105-B02): 6-7

Erfüllt folgende **Brandschutznormen:** AS/NZS 1530.3; AS/NZS 3837 class 2; BS 5852 Crib 5 with treatment*; BS 5852 ignition source 3; BS 5852 part 1; EN 1021-1/2; GB 50222 B1 with treatment*; IMO FTP Code 2010:Part 8; NF D 60 013; NFPA 260; SN 198 898 5.3 with treatment*; UNI 9175 1IM; US Cal. Bull. 117-2013; ÖNORM B1/Q1*

Tempt (2)



TE61169



TE65076



TE64118



TE60152



TE66129



TE66130



TE60900



TE60153

Material: 100 % Polyester (Trevira CS)

Gewicht: 504 g/lfm

Breite: 140 cm

Scheuertouren (EN ISO 12947-2, Martindale): 90.000

Pilling/Knötchenbildung (EN ISO 12945-2): 4-5

Reibechtheit nass/trocken (EN ISO 105-X12): 4-5/4-5

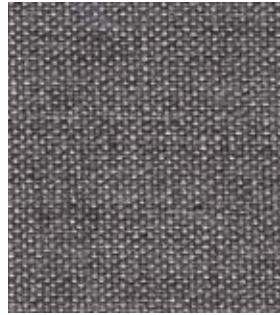
Lichtechtheit (EN ISO 105-B02): 5-8

Erfüllt folgende **Brandschutznormen***: EN 1021, part 1 & 2;
BS 5852 Part 1 0,1; CA TB 117-2013

Remix (2)



21M



21Q



21U



21W



21Z



23A



23B



23C



23D



23E



23F



23H



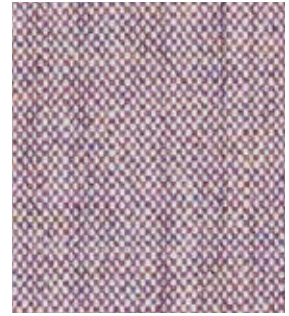
22V



22A



22D



22W



21L



21P



21T



21H

Material: 90% Wolle, 10% Nylon

Gewicht: 415 g/lfm

Breite: 138 cm

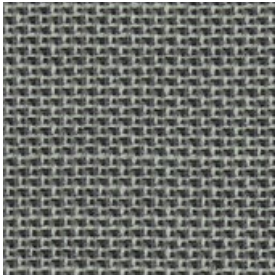
Scheuertouren (EN ISO 12947-2, Martindale): 100.000

Pilling/Knötchenbildung (EN ISO 12945-2): 4

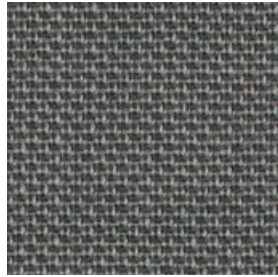
Reibechtheit nass/trocken (EN ISO 105-X12): 4-5/4

Lichtechtheit (EN ISO 105-B02): 5-7

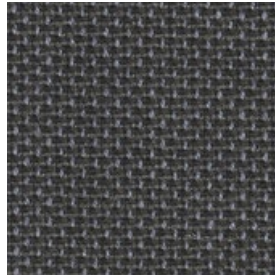
Erfüllt folgende **Brandschutznormen***: EN 1021, part 1 & 2 BS 5852: 1990; Section 1, Ignition Sources 0,1; ÖNORM B3825; UNI 9175-Metodo CSE RF/83



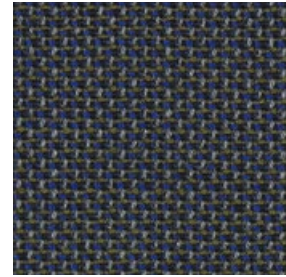
MO4101



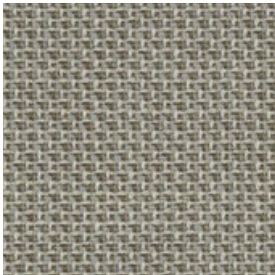
MO3101



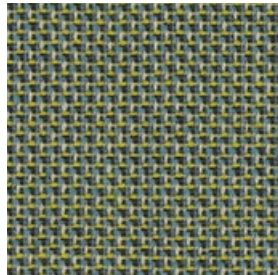
MO1101



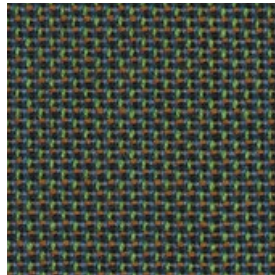
MO2104



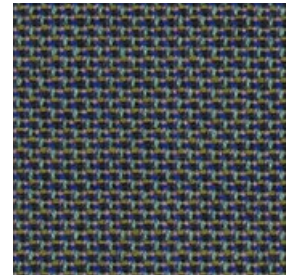
MO5101



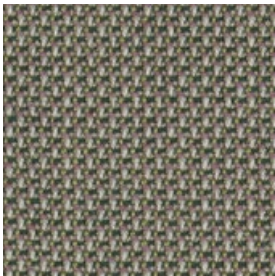
MO4102



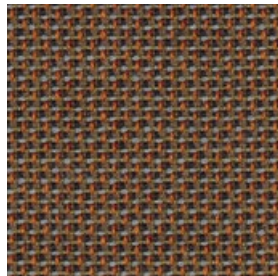
MO14101



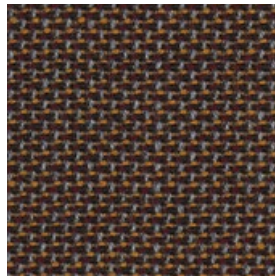
MO13101



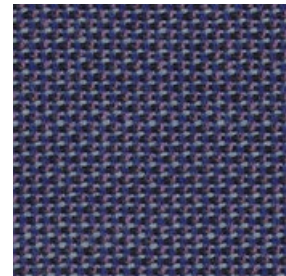
MO6101



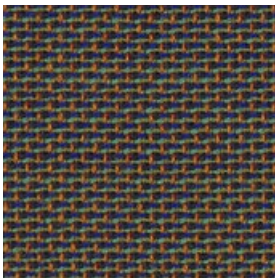
MO10101



MO2103



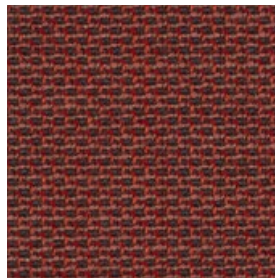
MO9102



MO10103



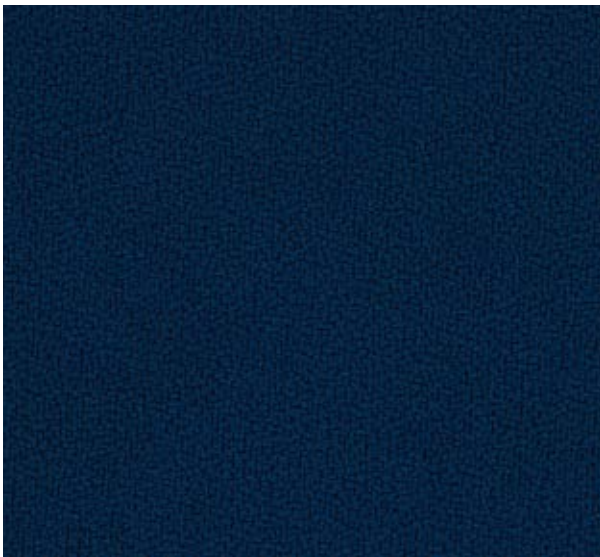
MO11101



MO8101

*Die Schwerentflammbarkeit hängt vom verwendeten Polsteraufbau ab. Informationen über den verwendeten Polsteraufbau sind in der Regel über die Prüfberichte des Herstellers erhältlich.

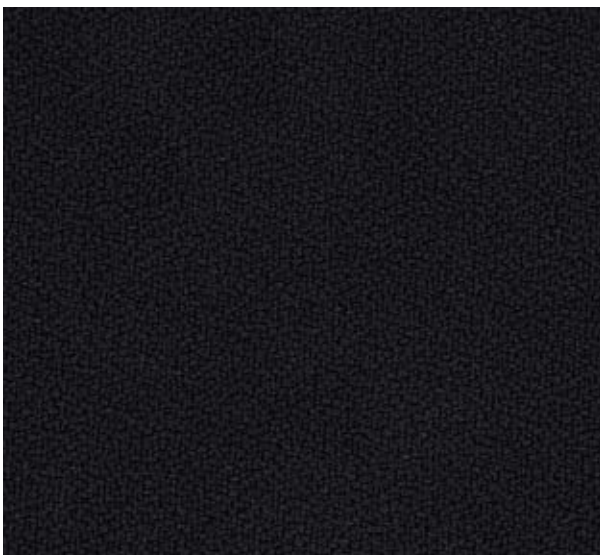
Material: 85% New Zealand Wolle, 15% Polyamid
Gewicht: 475 g/lfm
Breite: 140 cm
Scheuertouren (EN ISO 12947-2, Martindale): 200.000
Pilling/Knötchenbildung (EN ISO 12945-2): 4
Reibechtheit nass/trocken (EN ISO 105-X12): 4-5/4-5
Lichtechtheit (EN ISO 105-B02): 5-6
 Erfüllt folgende **Brandschutznormen:** EN 1021, part 1 & 2;
 BS 5852 Part 1 0,1; BS 5852 Crib5, CA TB 117-2013*



9P1



9P3



9P2

Material: 100 % Polyester

Gewicht: 399 g/lfm

Breite: 140 cm

Scheuertouren (EN ISO 12947-2, Martindale): ≥ 100.000

Pilling/Knötchenbildung (EN ISO 12945-2): 5

Reibechtheit nass/trocken (EN ISO 105-X12): 4/4

Lichtechtheit (EN ISO 105-B02): 6

Erfüllt folgende **Brandschutznormen***: EN 1021, part 1 & 2; BS 7176 Low Hazard